

JetPeel by TavTech Academy



JETPRO TOGO TECHNICAL PRESENTATION

The JetPeel jet pressure energy system for:

- Lymphatic Massage
- Exfoliation
- Trans-epidermal Infusion of a rich variety of nutrients and solutions



Anti-Aging Care



Scalp & Hair



Lightening



Clear



Soothing



Growth Factor



Renewal Care

PRESSURE-ENERGY: THE POWER BEHIND JETPEEL

How the technology works:

1

Pressurized air is generated at 95psi (6.5 bar)

2

High pressure is manipulated to accelerate liquid together with the pressurized air to form a misty jet with a speed of 200 m/sec (660 ft/sec)

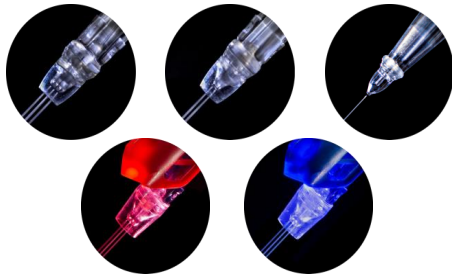
3

A concave region stretching the skin opens trans-epidermal microchannels allowing the enriched liquid to penetrate deeper and deliver nutrients and treatment solutions



THE DEVICE

- The JetPro ToGo by TavTech trans-epidermal system is an electro-pneumatic device that creates a high velocity two-phase jet directed onto the skin through a specially designed and patent protected handpiece .
- When the jet spray, consisting of fast microdroplets of liquid solution and air impinges on the skin, exfoliation and infusion may occur, according to the usage mode.



- Only the original JetPeel by TavTech handpieces are recommended for use on the JetPro ToGo device. Use of other handpieces which have not been manufactured, tested and approved for use by TavTech Ltd. may cause undesirable results.
- TavTech Ltd. takes no responsibility for such unauthorized use.

THE DEVICE: PACKAGE CONTENTS

Every JetPro ToGo system includes the following:

- Device Platform (JetPro ToGo Device).
- Protective Coat
- Accessories Bag
- JetCare liquid solutions holder
- JetPro ToGo unit
- Foot pedal
- Handpiece kit
- Air connecting tube
- Power cord
- JetPeel Red and Blue Led Accessory
- Protective Glasses



SETTING UP THE DEVICE

- Open the package.
- Check to make sure that the unit, handpieces package, foot control pedal, air connecting tube and power cord are in their proper compartments and are not visibly damaged before removing them.
- Remove the box. Keep the box and packing materials in case of service shipping.
- To move the device, you must use the extendable handle (like a trolley).
- Confirm that the electrical plug is correct for the country of use.
- Peel off the plastic sheet covering the exterior of the device.
- Insert the Foot Control Plug into the Foot Control Socket on the top panel.
- Supply voltage given on the rating plate must be consistent with local supply voltage. It is obligatory to use only the power cord recommended by manufacturer.
- Connect the power cord to the electrical socket on the side panel
- The screw the air connecting tube into the Luer socket on the top panel.
- Carefully connect the free end of the air-connecting tube to the handpiece's Luer connector.
- Insert the LED Plug into the LED Control Socket on the top panel.
- Recommended to use liquid solution holders for liquid solution bottle (Figure 1)
- Remove the cap protecting the spike and gently insert it into the port of the liquid solution container (Figure 2).
- Integrate the LED into the Handpiece.
- Operate the device 3 times by pushing the start button and pressing the foot pedal for several seconds to confirm that the handpiece works correctly (jet should flow out of the nozzles)
- Check if LED works.



Figure 1-
liquid
solution
holders

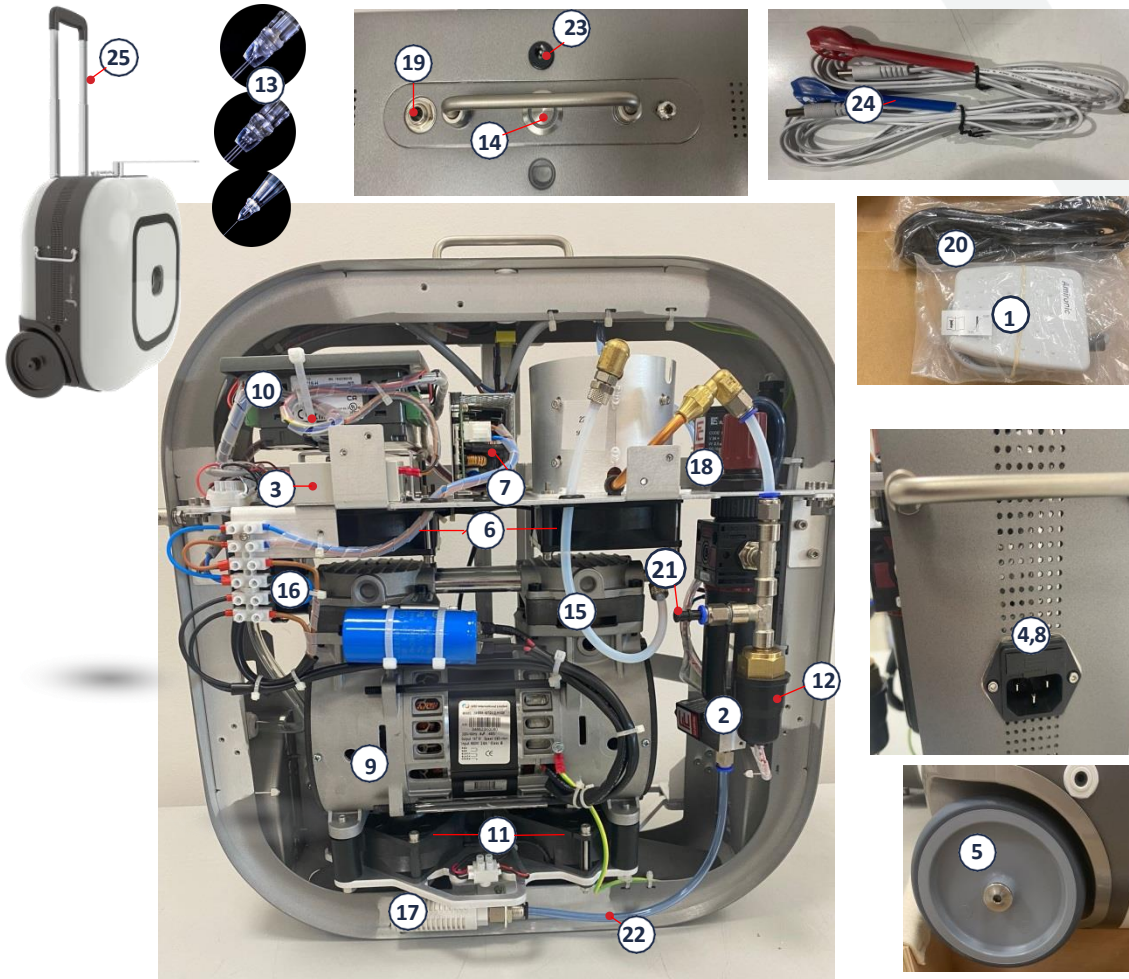


Solution

Spike

Figure 2-
Connecting
to the
solution

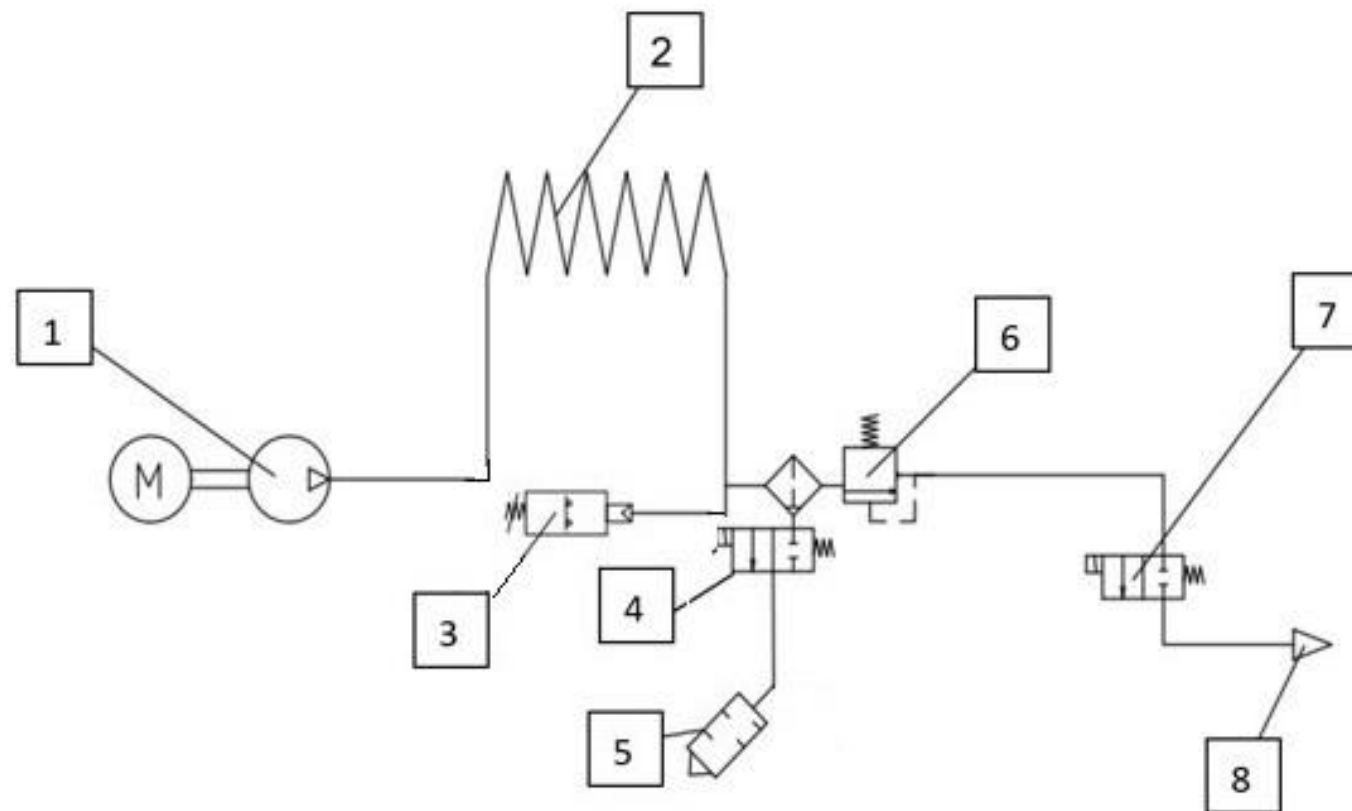
MAIN COMPONENTS



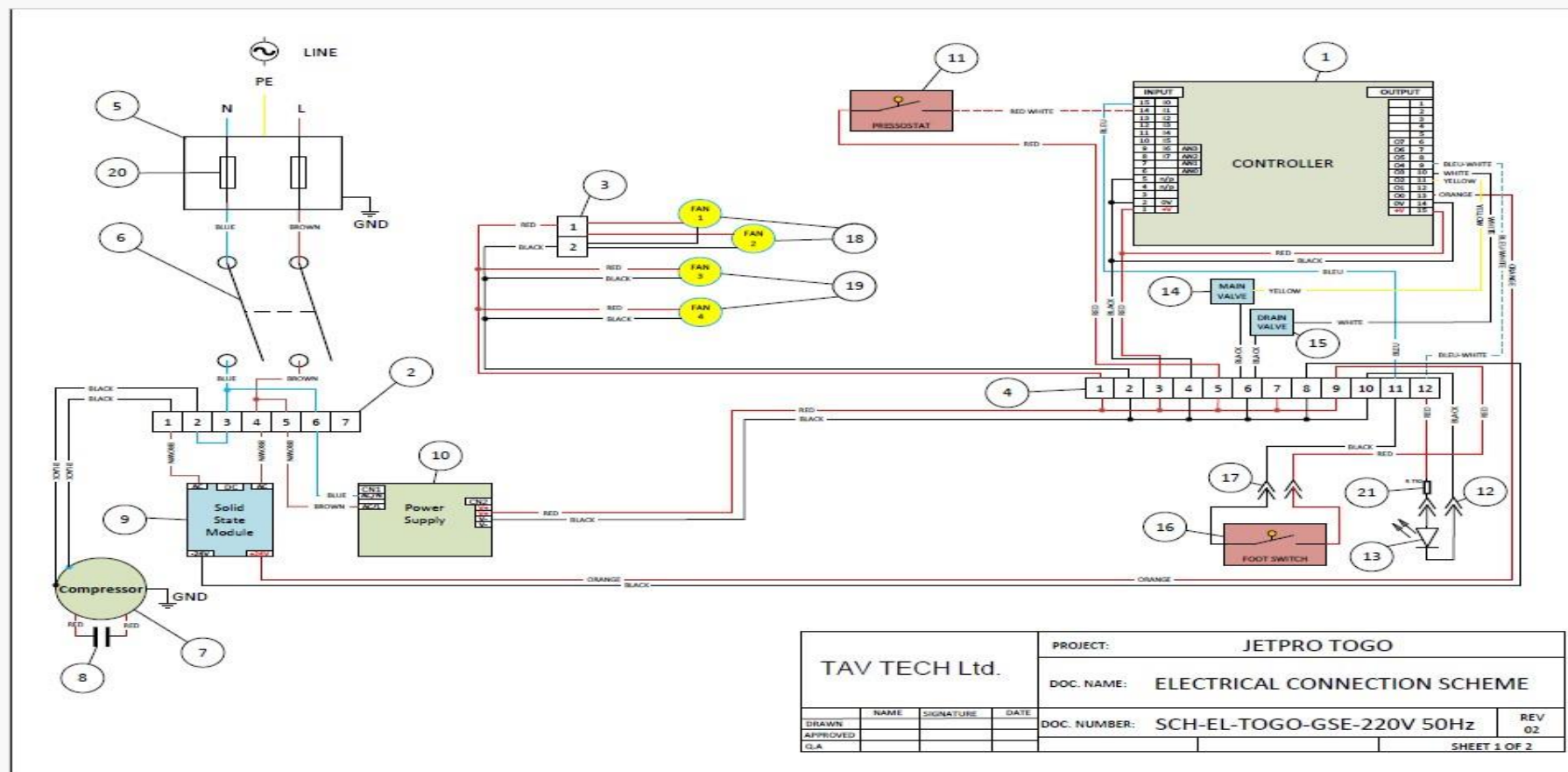
- | | | |
|--|--|--|
| 1 Foot Pedal
AS0464 | 9 Compressor
assay
AS0502 | 17 Silencer
AS0521 |
| 2 Filter-regulator & Drainage
valve assembly
AS0506 | 10 Micro OPLC JZ20-T10-H
AS0513 | 18 Main valve for ToGo
AS0509 |
| 3 Solid state relay
40A
AS0512 | 11 Two Lower Air-fan 92x92x 32
AS0520 | 19 Foot Pedal Jack Socket
AS0522 |
| 4 Fuse 10A/6.3A
EL0133/EL
0131 | 12 Pressostat
PMN10AB
MB0439 | 20 Electrical
Cable |
| 5 Wheel ToGo PJO150x32
MB0850 | 13 Handpiece
- | 21 Pressure check
point |
| 6 Upper Right Air-fan 92x92x 32
AS0508 | 14 Main Power switch
AS0523 | 22 Air
Tubes |
| 7 Power Supply RPS-120
EL0304 | 15 Connection
tube
MB0578 | 23 LED Socket
AS0526 |
| 8 Power entry module
KMF
AS0525 | 16 Intake filter of
compressor
MB0542 | 24 JetPeel Led Accessory
AS0465 |
| | | 25 Telescopic Handle
MB0800 |

PNEUMATIC SCHEME

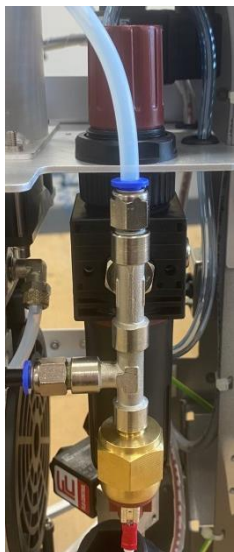
- 1 - Compressor
- 2 - Cooler
- 3 - Pressostat
- 4 - Drainage Valve
- 5 - Silencer
- 6 - Filter Regulator
- 7 - Main Valve
- 8 - Luer



ELECTRICAL DIAGRAM 220V



CRITICAL PARTS



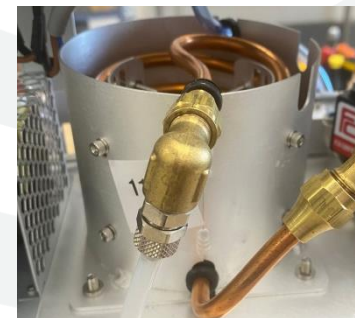
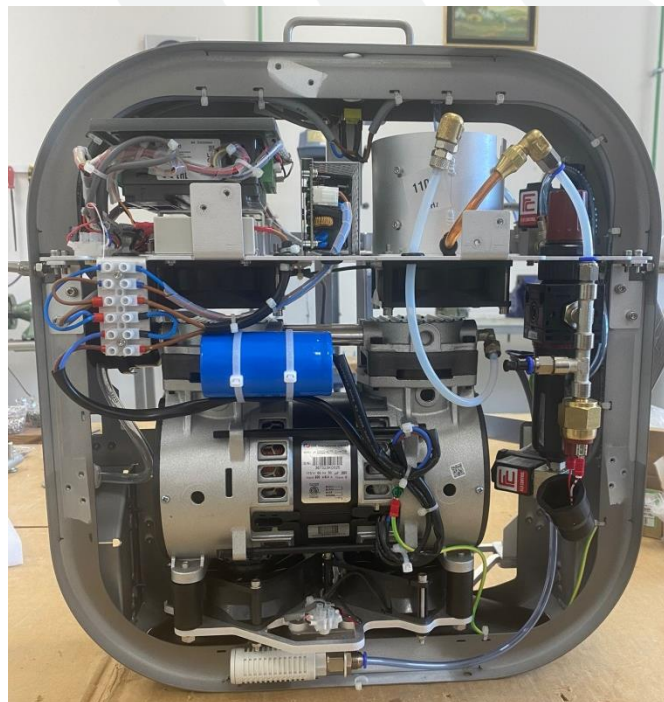
Filter Regulator



Valves



Solid State Relay



Cooler



Power Supply



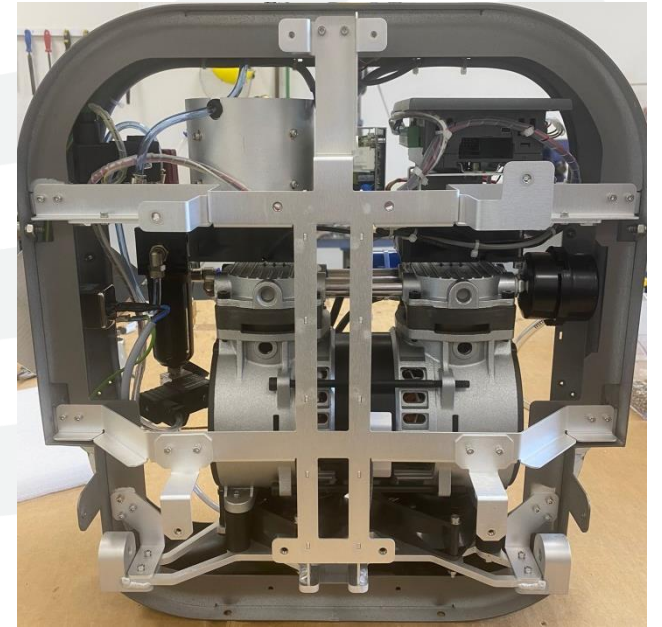
Compressor

MAIN MALFUNCTIONS

- **Compressor**
- **Valves**
- **Power Supply**



Front View



Back View

TROUBLE SHOOTING

Malfunction



DEVICE NOT WORKING

Device can't be turned on

Possible causes

Main electrical cable not connected to electrical socket

Fuses are damaged

Solutions





[Click here to watch the solution](#)



Connect main cable to the electricity and turn on switch **(14)**

If still does not turn on, change x2 fuses **(4)** on the power socket at the right side of the device

TROUBLE SHOOTING

Malfunction	Possible causes	Solutions
 NO NOISE FROM FANS Device is switched on, fans not working	Fuses are damaged	 Click here to watch the solution Check fuses (4) , if necessary, change them Check electrical connections to fans
	Power supply problem	Open front side of the device and check green light on the power supply (7) If not working change the power supply

TROUBLE SHOOTING

Malfunction	Possible causes	Solutions
 DEVICE NOT REACTING Device is switched on ,but the pedal does not react	 Pedal is not connected	  Click here to watch the solution Confirm that the pedal plug is connected to the jack socket (19) at the upper panel of the device
	Pedal is connected, device is not working	Change pedal (1)

TROUBLE SHOOTING


Malfunction	Possible causes	Solutions
 NOISE OR VIBRATIONS ON DEVICE Inappropriate noise or vibration when device is on and working	Rubber shock absorber Compressor	Click here to watch the solution Check rubber shock absorber on the base of the compressor. If necessary, change all four of them Check pressure (Figure 3) . If low pressure or knocking noise, change compressor



Figure 3

TROUBLE SHOOTING

Malfunction

Possible causes

Solutions



PRESSURE PROBLEMS



[Click here to watch the solution](#)

Handpiece

Change handpiece **(13)**

Low pressure on handpiece

Drainage valve / Main valve

Connect pressure gauge to the connector in front of the device and then to the handpiece **(Figure 3)**.
Check air pressure – it should be between 86-104 psi.
If lower, check drainage valve **(2)** or main valve and replace if necessary

Filter Regulator

Check air leaks on connections to and from Filter Regulator **(2)**

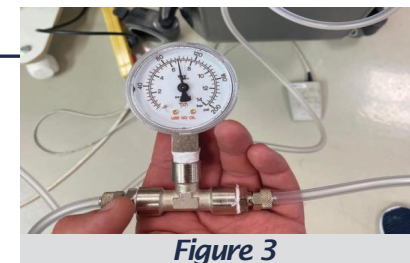


Figure 3

TROUBLE SHOOTING

Malfunction



PRESSURE PROBLEMS - CONTINUED

Low pressure on handpiece
- *continued*

Possible causes

Compressor

Solutions



[Click here to watch the solution](#)

Check pressure (**Figure 3**). If low pressure or knocking noise, change compressor

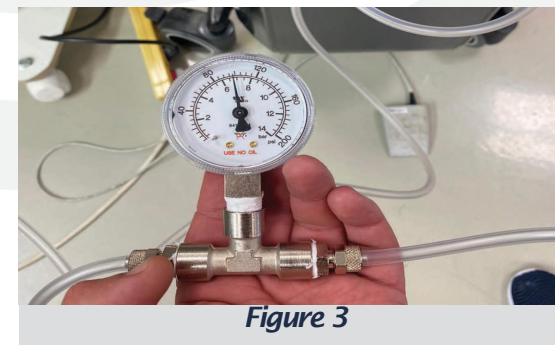


Figure 3

TROUBLE SHOOTING

Malfunction	Possible causes	Solutions
HANDPIECE PROBLEMS		
Air is flowing, yet no liquid solution is coming out	Handpiece blockage, no liquid solution	Confirm that the solution source (bottle) is in a hanging position, and that there is liquid solution remaining in the bottle. Check that the air valve on the spike is open to prevent a vacuum effect in the bottle

TROUBLE SHOOTING

Malfunction	Possible causes	Solutions
HANDPIECE PROBLEMS - CONTINUED No air or liquid solution coming out of handpiece	Handpiece blockage, no liquid solution, no air pressure	Confirm that the device is ON and that the pedal (1) is working. Confirm that the air tube is secured to the front of the device and that the other end of the tube is secured to the handpiece (13) . The handpiece may be blocked. Replace the handpiece. If the new handpiece is still not releasing air or fluid, confirm the usage of certified liquid solutions. Uncertified liquid solutions may not flow through the handpiece and may cause handpiece blockage and damage to the device.


TROUBLE SHOOTING

Malfunction	Possible causes	Solutions
HANDPIECE PROBLEMS - CONTINUED Air is flowing, yet no liquid solution is coming out	Handpiece malfunction	Confirm that the device is ON and that the pedal is working. Disconnect the handpiece. If the air is blowing from the tubing, check the connector and reconnect the handpiece. The handpiece may be blocked. Replace handpiece. If the new handpiece is still not releasing air or fluid, confirm the usage of certified liquid solutions. Uncertified liquid solutions may not flow through the handpiece and may cause handpiece blockage and damage to the device.

TROUBLE SHOOTING

Malfunction	Possible causes	Solutions
HANDPIECE PROBLEMS - CONTINUED While in operation, liquid solution is leaking from the tip or anywhere else other than the nozzle	Handpiece malfunction	Handpiece is fractured. Damage may be due to a fall or mishandling of the handpiece. JetPeel products are manufactured under strict quality assurance procedures. Efforts are made to assure optimal shipping and handling. If damage appears in a new handpiece, return to place of purchase. Sterile handpieces are single use, and non-sterile handpieces are limited to 10 treatment sessions or use within two weeks of opening, the earlier occurrence of the two.

TROUBLE SHOOTING

Malfunction	Possible causes	Solutions
 LED ACCESSORY NOT WORKING Led accessory can't be turned on	LED cable or Led Unit damage	Replace the LED accessory (24)
	LED Socket damage	Open front side of the device and check electrical connections to the LED Socket (23)

PRESSURE TEST

1. Connect electric cable to machine **(8)**
2. Connect the foot cable to machine **(19)**
3. Connect the air tube with Pressure Gauge **(figure 3)** to luer and to hand piece
4. Turn on the machine
5. Press the button on foot-pedal
6. Check the pressure on test equipment

Pressure should be between 86 and 104 PSI.

[Click here to watch the solution](#)

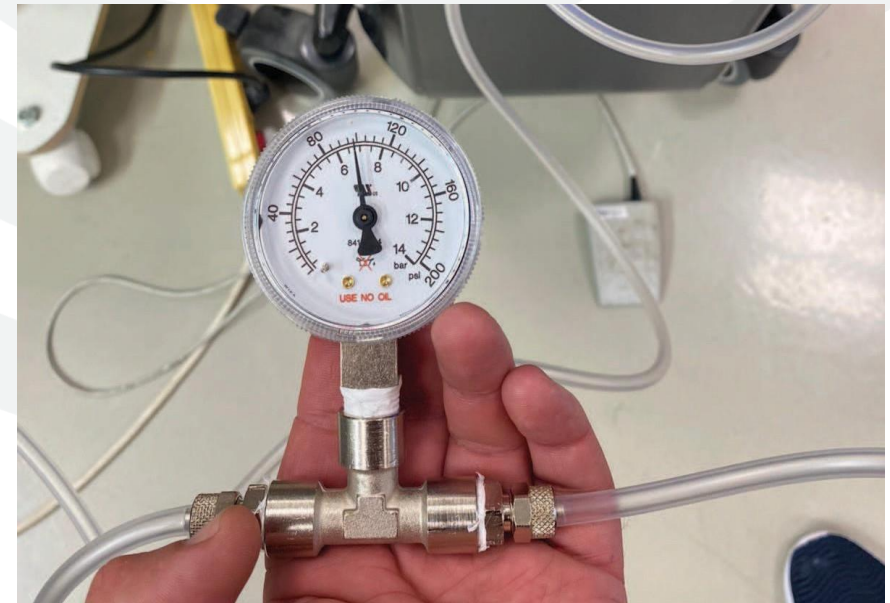


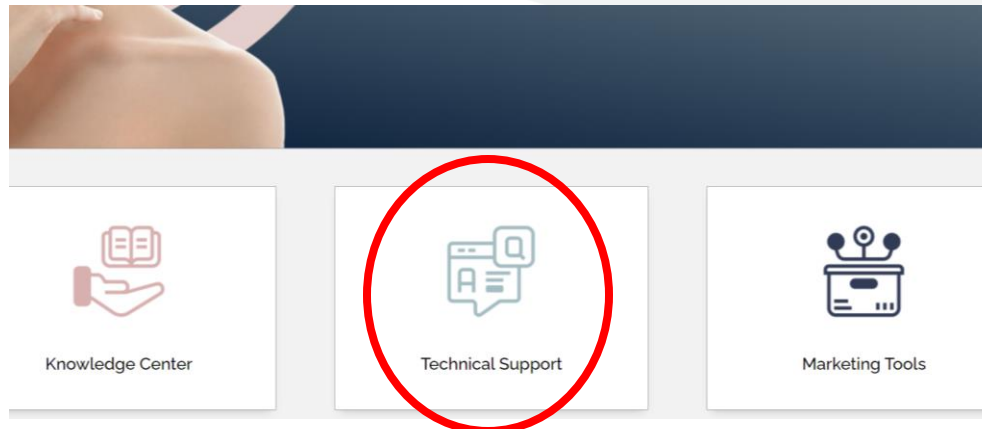
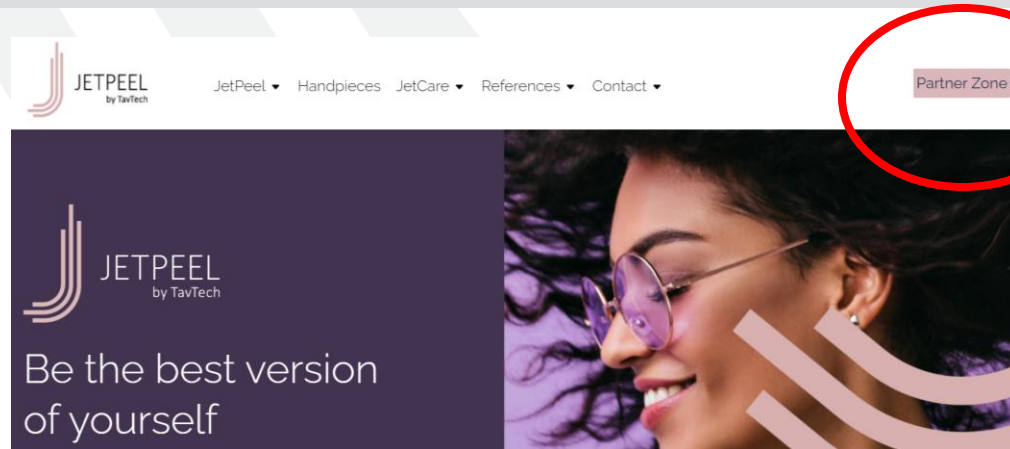
Figure 3

ON-LINE ASSISTANCE

1. Go to: www.jetpeel.com

2. Enter the Partner Zone
(registration required)

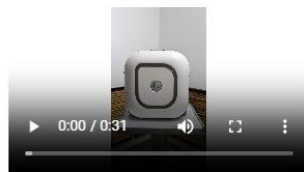
3. When in Partner Zone, Go to:
Technical Support



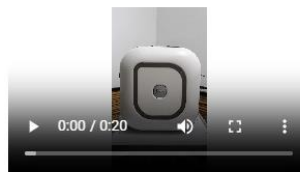
ON-LINE ASSISTANCE

Trouble Shooting: JetPro ToGo

1. Trouble Shooting Clips



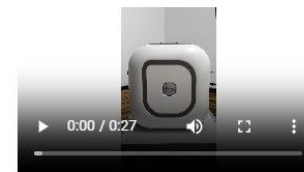
Device Doesn't Turn On



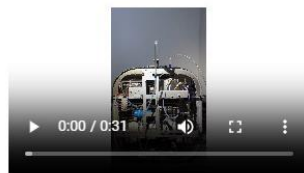
Device Fan Is Not Working



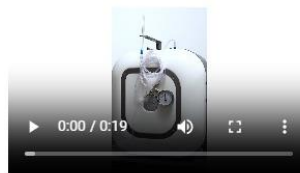
Foot Pedal Is Not Responding



Noise or Vibrations from the Device



Low Pressure from the



Final Test of Device

Parts Replacement: JetPro ToGo

2. Parts Replacement Clips



Main Valve Replacement in
JetPro ToGo



Power Supply Replacement in
JetPro ToGo

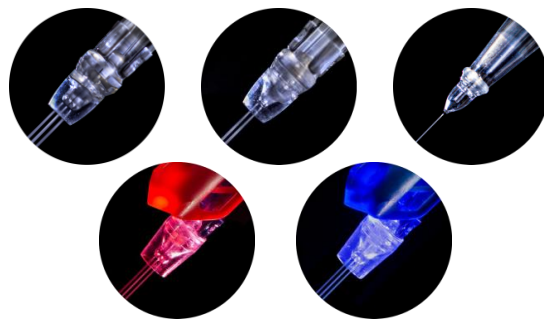


Compressor Replacement in
JetPro ToGo

JetPeel by TavTech – the perfect trio combining:

- the enduring JetPro devices,
- the original patented JetPeel handpieces, and
- premium JetCare solutions

designed exclusively for use together to deliver outstanding results



**JetPro by TavTech,
JetPro Duo by TavTech and
JetPro ToGo by TavTech
devices are only approved
for use with original
JetPeel by TavTech
handpieces**



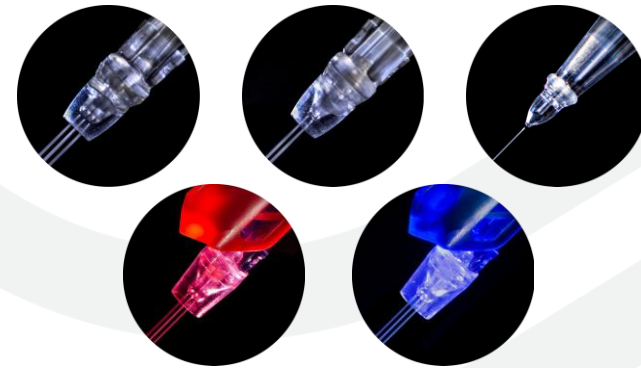
Sterile Handpieces: Single Use



Non-Sterile Handpieces: For a maximum of 10 treatments or up to 2 weeks after opening, whichever instance occurs first



**JetPeel by TavTech
handpieces may only be
used with original
JetCare by TavTech liquid
solutions**



**For any technical question please contact
Shai Betelman**

+972-54-9990755 | Email - shaib@tav-tech.com

support@jetpeel.com | www.jetpeel.com

JetPeel by TavTech Academy

