

JetPeel™ by TavTech Treatment Sequence

Step By Step to Beautiful Skin

JetPeel™ by TavTech is the world's leading aesthetic skincare treatment based on advanced jet pressure technology, loved by clinicians and customers all over the world. JetPeel is non-invasive, non-contact and needle free, with no pain, no scarring and no recovery downtime – just a comfortable, pleasant treatment for visibly smooth, glowing results, all year round. JetPeel treatment uses fine jet streams of pressurized air, combined with exclusive JetCare by TavTech liquid solutions, for trans-epidermal delivery with the patented JetPeel handpieces. The jet streams open up tiny microchannels without breaking the skin, allowing for the delivery of concentrated nourishment in the deeper layers where they have the most impact. JetPeel is effective in treating a wide range of skin concerns, including anti-aging, post-acne, rejuvenation and more. Simply choose the right JetCare solution and let the powerful JetPeel treatment do its magic, step by step. Discover the JetPeel treatment sequence, designed to bring out the very best of every skin type:

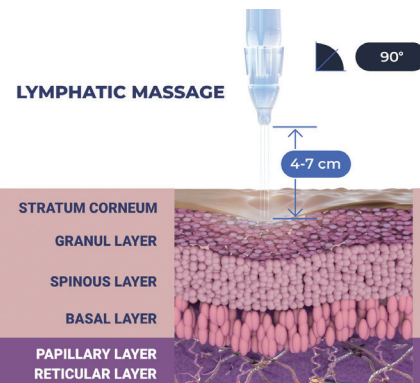
TavTech: Where Technology Meets Beauty

Since 1996, TavTech has been leading the development of cutting-edge jet pressure technology for the aesthetic industry, used by cosmetic specialists, aestheticians and dermatologists in clinics worldwide. With over two decades of R&D expertise, adherence to the highest regulatory standards, and a commitment to excellence and innovation, TavTech continues to advance the possibilities for safe, effective skin treatment that brings beautiful results.

STEP 1

LYMPHATIC MASSAGE

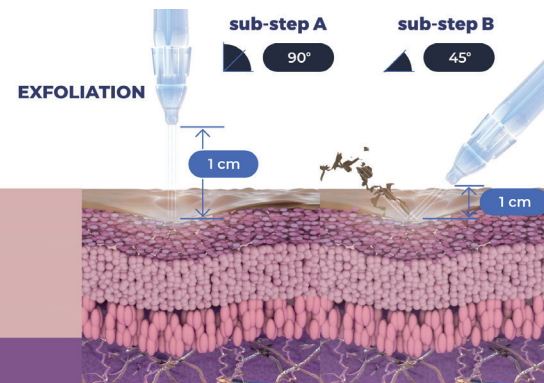
Detoxify the skin and boost micro-circulation to restore a natural, healthy balance.



STEP 2

EXFOLIATION

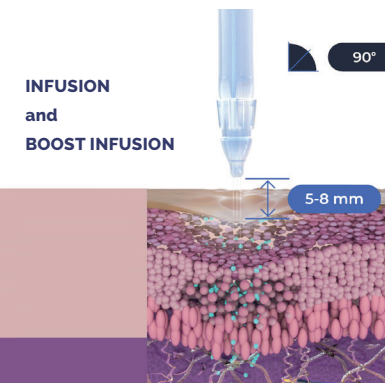
Gently exfoliate the skin surface to prep the skin for the infusion stage. Customize the exfoliating power for more sensitive skin types.



STEP 3

INFUSION

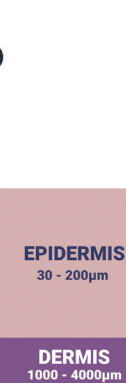
Deliver active ingredients into the skin to treat the concern at the source.



STEP 4

BOOSTER INFUSION

Amplify the treatment impact with highly concentrated booster formulas at the post-infusion stage.





JETPEEL

by TavTech