

JetPeel by TavTech Academy





JETPRO TECHNICAL PRESENTATION

The JetPeel jet pressure energy system for:

- **Lymphatic Massage**
- **Exfoliation**
- **Trans-epidermal Infusion of a rich variety of nutrients and solutions**



Anti-Aging Care



Scalp & Hair



Lightening



Clear



Soothing



Growth Factor



Renewal Care

PRESSURE-ENERGY: THE POWER BEHIND JETPEEL

How the technology works:

1

Pressurized air is generated at 95psi (6.5 bar)

2

High pressure is manipulated to accelerate liquid together with the pressurized air to form a misty jet with a speed of 200 m/sec (660 ft/sec)

3

A concave region stretching the skin opens trans-epidermal microchannels allowing the enriched liquid to penetrate deeper and deliver nutrients and treatment solutions



THE DEVICE

- The JetPro by TavTech trans-epidermal system is an electro-pneumatic device that creates a high velocity two-phase jet directed onto the skin through a specially designed and patent protected handpiece.
- When the jet spray, consisting of fast microdroplets of liquid solution and air impinges on the skin, exfoliation and infusion may occur, according to the usage mode.



- Only the original JetPeel by TavTech handpieces are recommended for use on the JetPro device. Use of other handpieces which have not been manufactured, tested and approved for use by TavTech Ltd. may cause undesirable results.
- TavTech Ltd. takes no responsibility for such unauthorized use.



THE DEVICE: PACKAGE CONTENTS

Every JetPro system includes the following:

- JetPro unit
- Foot pedal
- Handpiece kit
- Air connecting tube
- Power cord



SETTING UP THE DEVICE

- Open the package.
- Check to make sure that the unit, handpieces package, foot control pedal, air connecting tube and power cord are in their proper compartments and are not visibly damaged before removing them.
- Remove the box. Keep the box and packing materials in case of service shipping.
- Confirm that the electrical plug is correct for the country of use.
- Peel off the plastic sheet covering the exterior of the device.
- The device is heavy, so lifting and carrying the JetPro can lead to back injuries. Lifting and transporting of the device should be done with help. The device should be lifted by the underside in the vicinity of the wheels. Ensure safe location.
- The JetPro shall not be located near source of heat or humidity and shall not be subjected to direct sunlight.
- Device should be flat leveled.
- It is necessary to ensure a ventilation zone of the minimum 30 cm from the device back. Do not veil ventilation holes.

- Do not position the device so that it is difficult to operate the power switch.
- Supply voltage given on the rating plate must be consistent with local supply voltage. It is obligatory to use only the power cord recommended by manufacturer.
- Connect the power cord to the electrical socket on the back panel **(Figure 1)**.
- Place the Foot Control Pedal on the floor.
- Insert the Foot Control Plug into the Foot Control Socket on the back panel.
- Screw the air connecting tube into the Luer socket on the front panel.
- Carefully connect the free end of the air connecting tube to the handpiece's Luer connector.
- Remove the cap protecting the spike and gently insert it into the port of the solution container **(Figure 2)**.

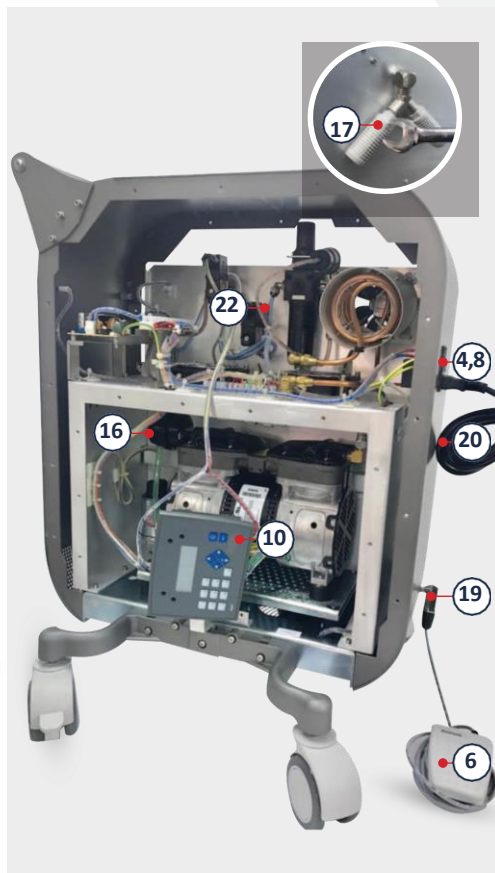
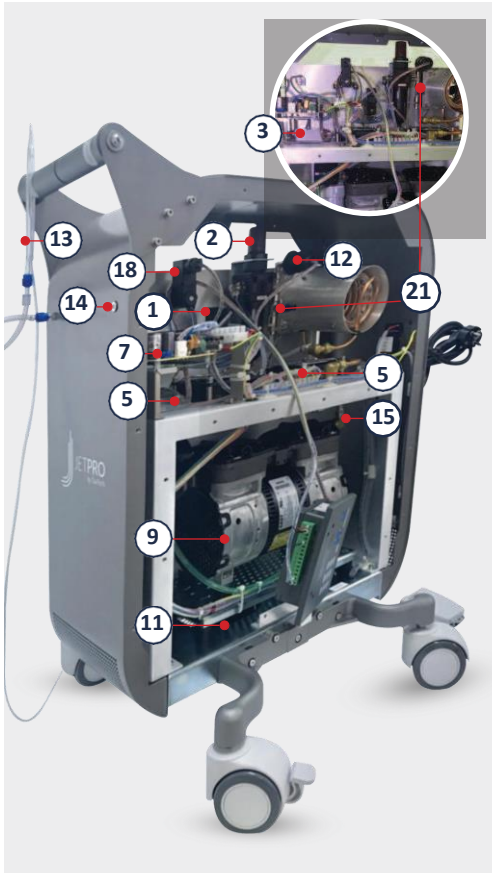


Figure 1- Unit back panel



Figure 2- Connecting to the solution

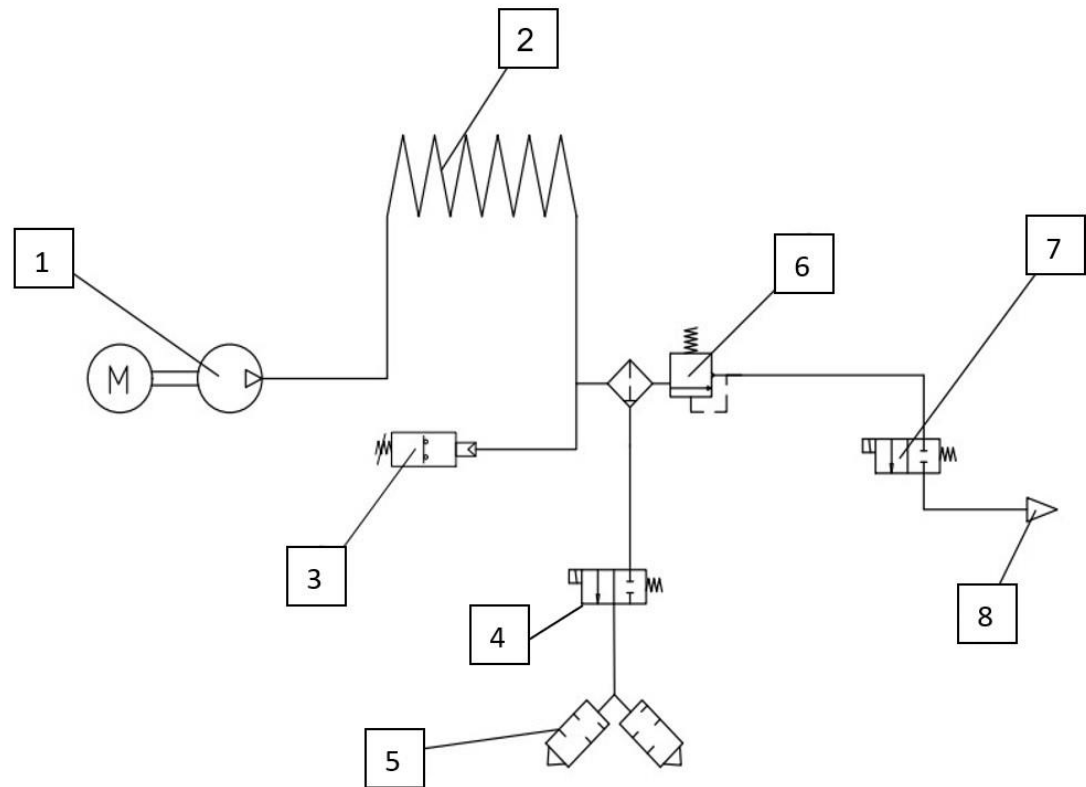
MAIN COMPONENTS



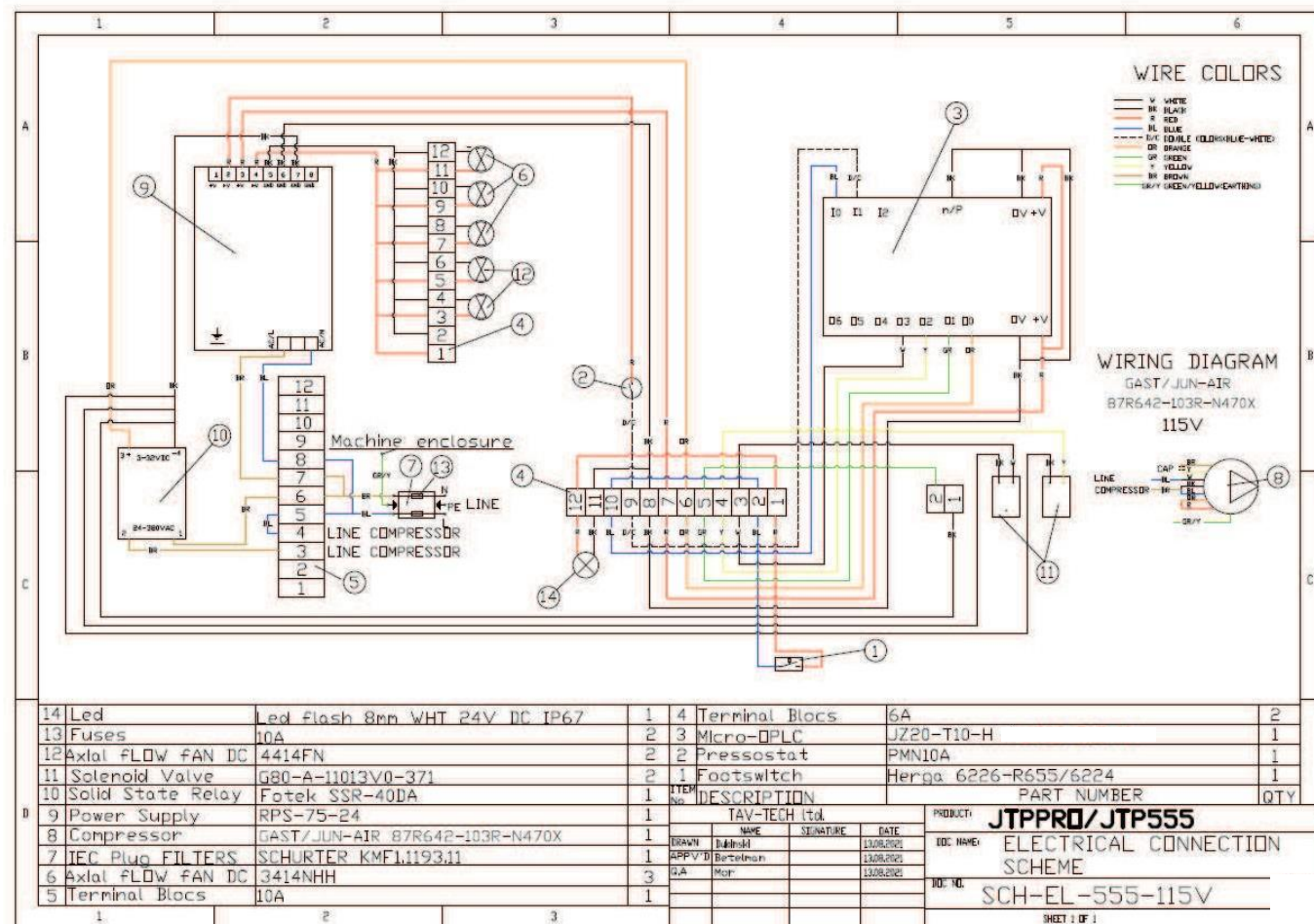
- | | | |
|---|---|---|
| 1 Drainage valve Geva 80 assay AS0250 | 9 Compressor assay AS0305 | 17 Silencers (on opposite side of panel) (QTY=2) MB0646 |
| 2 Filter-regulator assembly AS0186 | 10 Micro OPLC JZ20-T10-H AS0405 | 18 Main valve for My Jet & Mini AS0256 |
| 3 Solid state relay 40A EL0039 | 11 Fan 120/120/25 DC 24 V AS0264 | 19 Jack Socket AS0268 |
| 4 Fuse 10A/6.3A EL0133/EL0131 | 12 Pressostat PMN10AB MB0439 | 20 Electrical Cable EL0014 |
| 5 Air-fan 92x92x25 24V AS0263 | 13 Hand piece | 21 Pressure check point |
| 6 Foot Pedal AS0228 | 14 LED white AS0265 | 22 Air Tubes |
| 7 Power Supply RPS-75-24 EL0204 | 15 Connection tube MB0626 | |
| 8 Power entry module KMF EL0103 | 16 Intake filter of compressor MB0542 | |

PNEUMATIC SCHEME

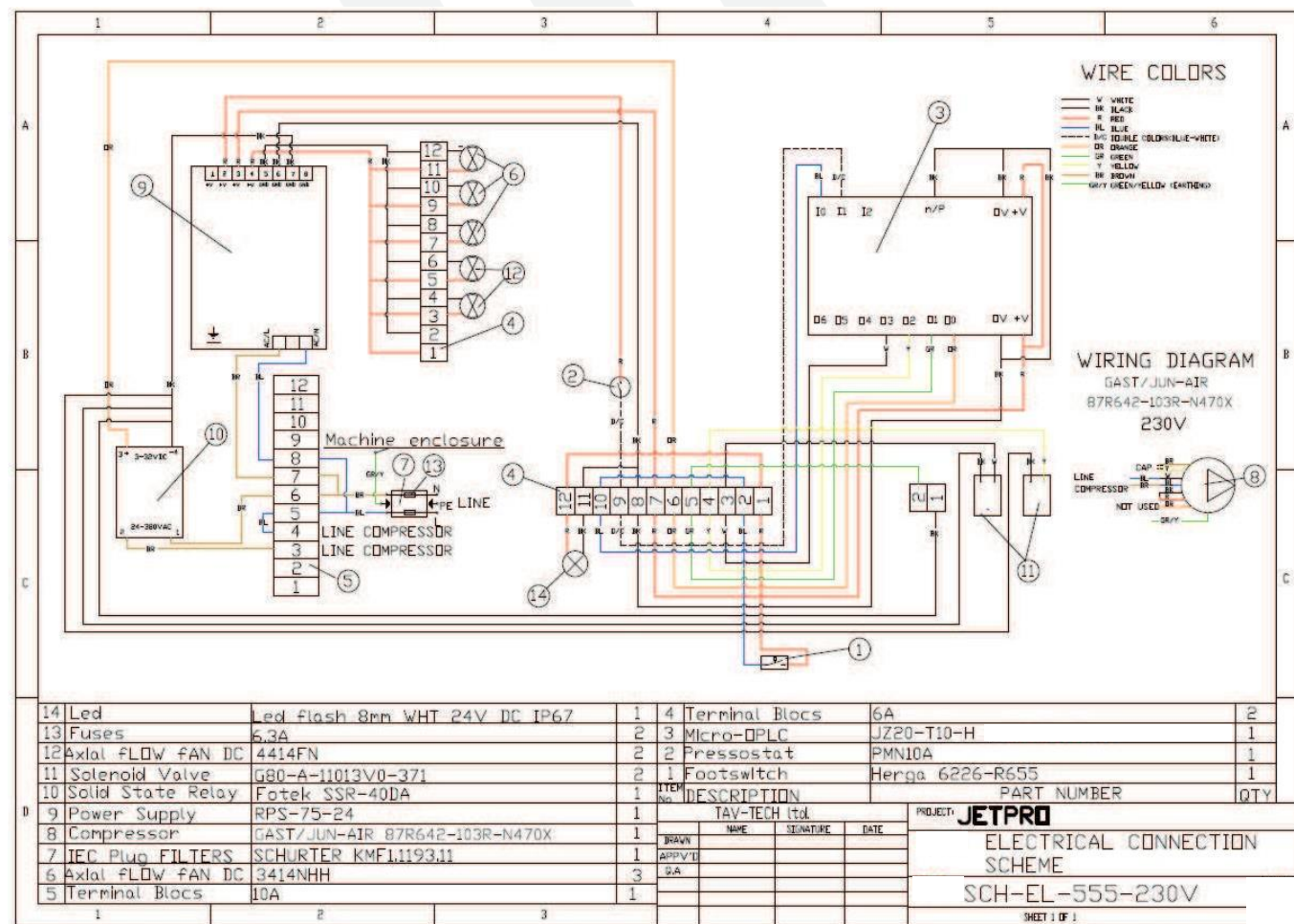
- 1 - Compressor
- 2 - Cooler
- 3 - Pressostat
- 4 - Drainage Valve
- 5 - Silencer
- 6 - Filter Regulator
- 7 - Main Valve
- 8 - Luer



ELECTRICAL DIAGRAM 115V



ELECTRICAL DIAGRAM 230V



CRITICAL PARTS



Filter Regulator



Valves



Cooler



Power Supply



Solid State Relay



Compressor

MAIN MALFUNCTIONS

- Compressor
- Valves
- Power Supply



TROUBLE SHOOTING

Malfunction



DEVICE NOT WORKING

Device can't be turned on

Possible causes

Main electrical cable not connected to electrical socket

Fuses are damaged

Solutions




[Click here to watch the solution](#)

Connect main cable to the electricity and turn on switch **(8)**

If still does not turn on, change x2 fuses **(4)** on the power socket at the back of the device

TROUBLE SHOOTING

| Malfunction | Possible causes | Solutions |
|--|----------------------|--|
|  NO NOISE FROM FANS Device is switched on, fans not working | Fuses are damaged | Click here to watch the solution Check fuses (4) , if necessary, change them Check electrical connections to fans |
| | Power supply problem | Open right side of the device and check green light on the power supply (7) If not working change the power supply |

TROUBLE SHOOTING

Malfunction



DEVICE NOT REACTING

Device is switched on, but
the pedal does not react

Possible causes

Pedal is not connected

Pedal is connected,
device is not working

Solutions





[Click here to watch the solution](#)


Confirm that the pedal plug is connected
to the jack socket **(19)** at the back of the
device

Change pedal **(6)**

TROUBLE SHOOTING

| Malfunction | Possible causes | Solutions |
|--|---|---|
|  PRESSURE SWITCH Device stopped working and “over pressure” message appears on screen on control unit in the device | Air outlet is blocked Pressure switch (Pressostat) fault |  Click here to watch the solution Change handpiece (13) Check that certified materials are being used Open right-side cover of device, press on number 0 on controller (10) to remove message and change the faulty pressure switch (Pressostat) on the filter regulator (2) . Turn on the device and check pressure on hand piece (13) Close covers |

TROUBLE SHOOTING

| Malfunction | Possible causes | Solutions |
|--|-----------------------|--|
|  NOISE OR VIBRATIONS ON DEVICE | | Click here to watch the solution |
| Inappropriate noise or vibration when device is on and working | Rubber shock absorber | Check rubber shock absorber on the base of the compressor. If necessary, change all four of them |
| | Compressor | Check pressure (Figure 3) . If low pressure or knocking noise, change compressor |

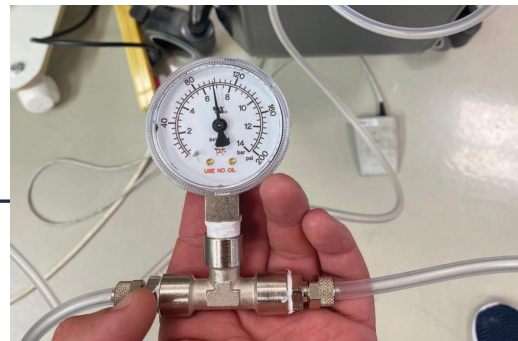


Figure 3

TROUBLE SHOOTING

Malfunction



FLICKERING LIGHT DEVICE NOT WORKING

Device stopped working
and LED light flickers

Possible causes

Power supply

Solutions



[Click here to watch the solution](#)

Open right-side cover of device and
change power supply **(7)**

TROUBLE SHOOTING

Malfunction

Possible causes

Solutions



PRESSURE PROBLEMS



[Click here to watch the solution](#)

Low pressure on handpiece

Handpiece

Change handpiece **(13)**

Drainage valve / Main valve

Connect pressure gauge to the connector in front of the device and then to the handpiece **(Figure 3)**. Check air pressure – it should be between 5.9-7.2 bar (86-104 psi). If lower, check drainage valve **(1)** or main valve and replace if necessary

Filter Regulator

Check air leaks on connections to and from Filter Regulator **(2)**

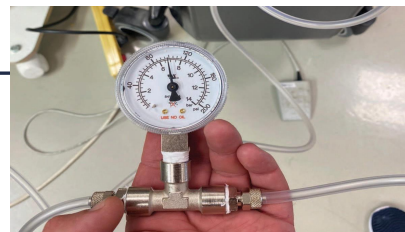


Figure 3

TROUBLE SHOOTING

Malfunction



PRESSURE PROBLEMS - CONTINUED

Low pressure on handpiece
- *continued*

Possible causes

Compressor

Solutions



[Click here to watch the solution](#)

Check pressure on the Filter Regulator with a pressure gauge suited to measuring pressure in the relevant range: Pull out the black plug from the Filter Regulator and connect the pressure gauge to the Filter Regulator in place of the black plug, and then turn the device on. The pressure should be approx. 7.2 bar (104 psi). If it is below 6 bar (87 psi), change compressor

TROUBLE SHOOTING

| Malfunction | Possible causes | Solutions |
|--|--|---|
| HANDPIECE PROBLEMS | | |
| Air is flowing, yet no liquid solution is coming out | Handpiece blockage, no liquid solution | Confirm that the solution source (bottle) is in a hanging position, and that there is liquid solution remaining in the bottle. Check that the air valve on the spike is open to prevent a vacuum effect in the bottle |

TROUBLE SHOOTING

| Malfunction | Possible causes | Solutions |
|---|---|--|
| HANDPIECE PROBLEMS - CONTINUED | | |
| No air or liquid solution coming out of handpiece | Handpiece blockage, no liquid solution, no air pressure | Confirm that the device is ON and that the pedal (6) is working. Confirm that the air tube is secured to the front of the device and that the other end of the tube is secured to the handpiece (13) . The handpiece may be blocked. Replace the handpiece. If the new handpiece is still not releasing air or fluid, confirm the usage of certified liquid solutions. Uncertified liquid solutions may not flow through the handpiece and may cause handpiece blockage and damage to the device |

TROUBLE SHOOTING

| Malfunction | Possible causes | Solutions |
|--|-----------------------|--|
| HANDPIECE PROBLEMS - CONTINUED Air is flowing, yet no liquid solution is coming out | Handpiece malfunction | Confirm that the device is ON and that the pedal is working. Disconnect the handpiece. If the air is blowing from the tubing, check the connector and reconnect the handpiece. The handpiece may be blocked. Replace handpiece. If the new handpiece is still not releasing air or fluid, confirm the usage of certified liquid solutions. Uncertified liquid solutions may not flow through the handpiece and may cause handpiece blockage and damage to the device |

TROUBLE SHOOTING

| Malfunction | Possible causes | Solutions |
|--|-----------------------|--|
| HANDPIECE PROBLEMS - CONTINUED While in operation, liquid solution is leaking from the tip or anywhere else other than the nozzle | Handpiece malfunction | Handpiece is fractured. Damage may be due to a fall or mishandling of the handpiece. JetPeel products are manufactured under strict quality assurance procedures. Efforts are made to assure optimal shipping and handling. If damage appears in a new handpiece, return to place of purchase. Sterile handpieces are single use, and non-sterile handpieces are limited to 10 treatment sessions or use within two weeks of opening, the earlier occurrence of the two. |

PRESSURE TEST

1. Connect electric cable to machine **(8)**
2. Connect the foot cable to machine **(19)**
3. Connect the air tube with Pressure Gauge **(figure 3)** to luer and to hand piece
4. Turn on the machine
5. Press the button on foot-pedal
6. Check the pressure on test equipment

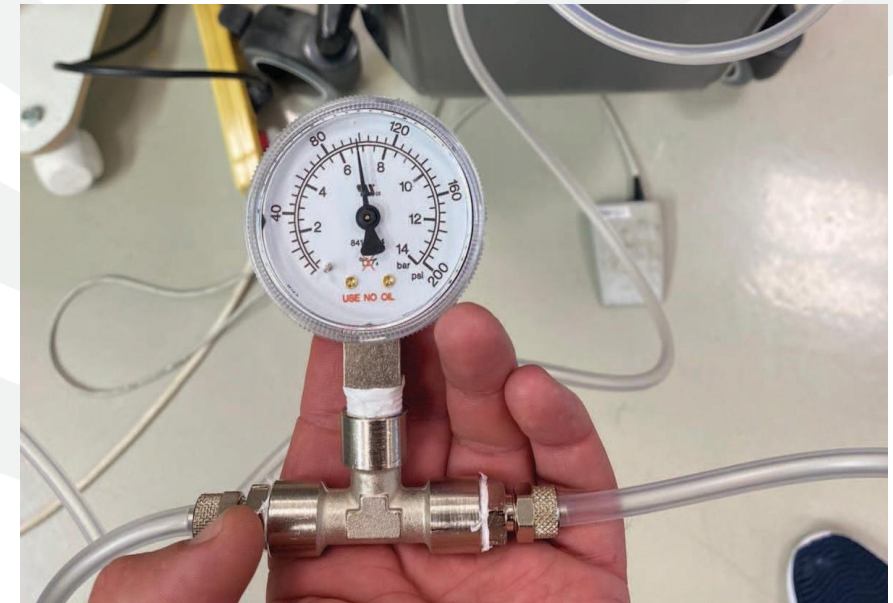


Figure 3

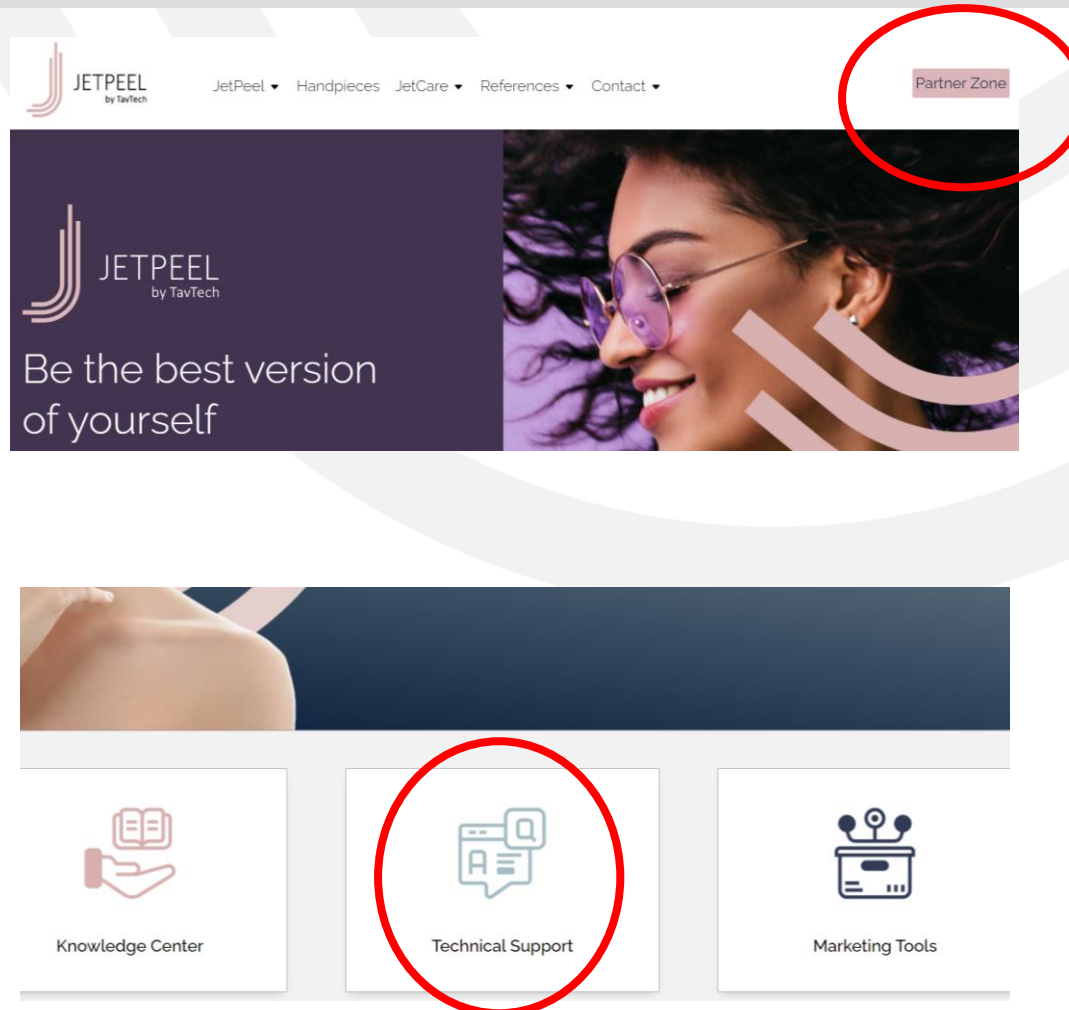
Pressure should be between 85.5 and 104.5 PSI.

ON-LINE ASSISTANCE

1. Go to: www.jetpeel.com

2. Enter the Partner Zone
(registration required)

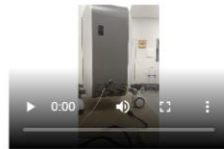
3. When in Partner Zone, Go to:
Technical Support



ON-LINE ASSISTANCE

1. Trouble Shooting Clips

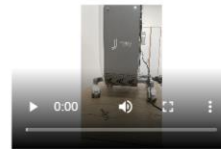
Trouble Shooting



Device Doesn't Turn On



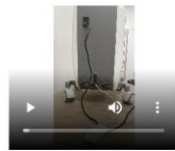
Device Fan is not Working



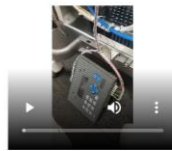
Device Led Lights Flickers



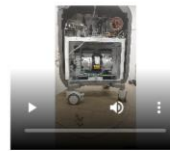
Noise or Vibrations from the Device



Foot Pedal is not Responding



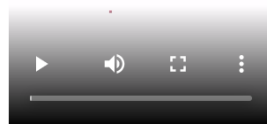
Over Pressure Message



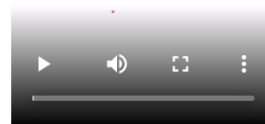
Low Pressure from the Handpiece

2. Parts Replacement Clips

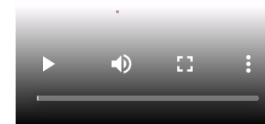
Parts Replacement



Re-assembling a Main Valve



Re-assembling a Power Supply



Re-assembling a Compressor

JetPeel by TavTech – the perfect trio combining:

- the enduring JetPro device,
- the original patented JetPeel handpieces, and
- premium JetCare solutions

designed exclusively for use together to deliver outstanding results



**JetPro by TavTech and
other original JetPeel by
TavTech devices are only
approved for use with
original JetPeel by TavTech
handpieces**



Sterile Handpieces: Single Use



Non-Sterile Handpieces: For a maximum of 10 treatments or up to 2 weeks after opening, whichever instance occurs first



**JetPeel by TavTech
handpieces may only be
used with original
JetCare by TavTech liquid
solutions**



For any technical question please contact

Shai Betelman

+972-54-9990755 | Email - shaib@tav-tech.com

support@jetpeel.com | www.jetpeel.com

JetPeel by TavTech Academy

