

Hyperpigmentation

Presentation by: Laura Masini, International Trainer, TavTech

August 2022



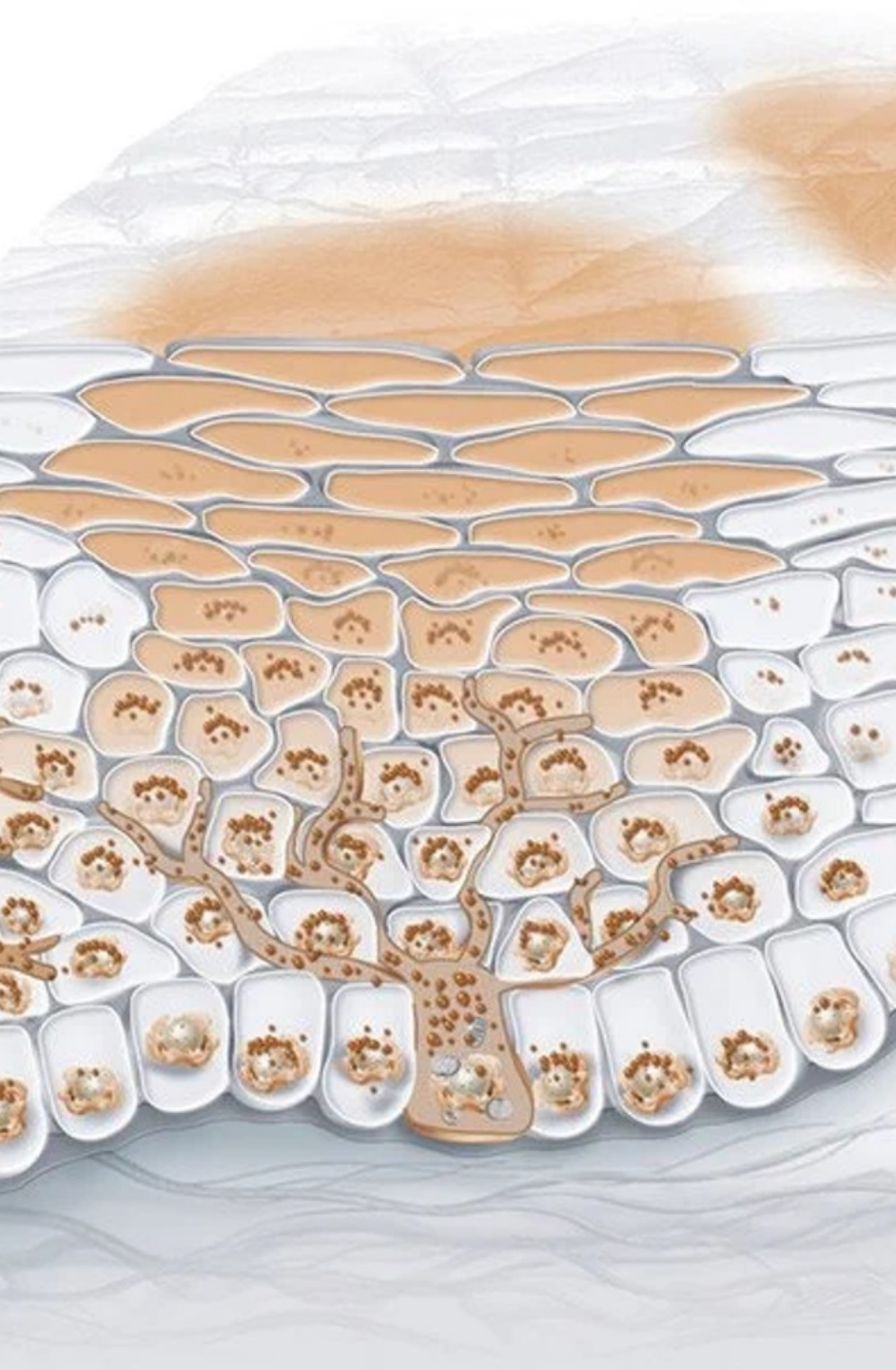


Hyperpigmentation

Hyperpigmentation appears as brown or black spots which are known as:

- **Age/Sunspots**
- **Melasma**
- **Post-inflammatory hyperpigmentation**

It can appear in **different areas of the body**, such as the face, décolleté, hands and arms, **especially after the summer**, and can affect **all skin types**.



What causes hyperpigmentation?

Abnormal production of melanin create dark spots and that may occur due to a number of reasons:

- Exposure to UV rays
- Skin lesions, such as a cuts, burns, injuries
- Inflammation
- Hormonal imbalances and pregnancy (melasma)
- Medications
- Skin aging
- Pollution
- Photo-Aging

The two main causes of hyperpigmentation:

Sun Exposure

- causes photo-damage



Skin Aging -

skin darkening
with age





Hyperpigmentation on mature skin

Hyperpigmentation on mature skin is a consequence of:

- Natural **slowdown of cellular activity**
- the skin cannot keep smooth, plump, and healthy.
- **The elimination of old cells is slower**
- this creates clusters of keratin that form dark, rough skin spots.
- **The number of melanocytes cells decrease**, however they increase in size and agglomeration

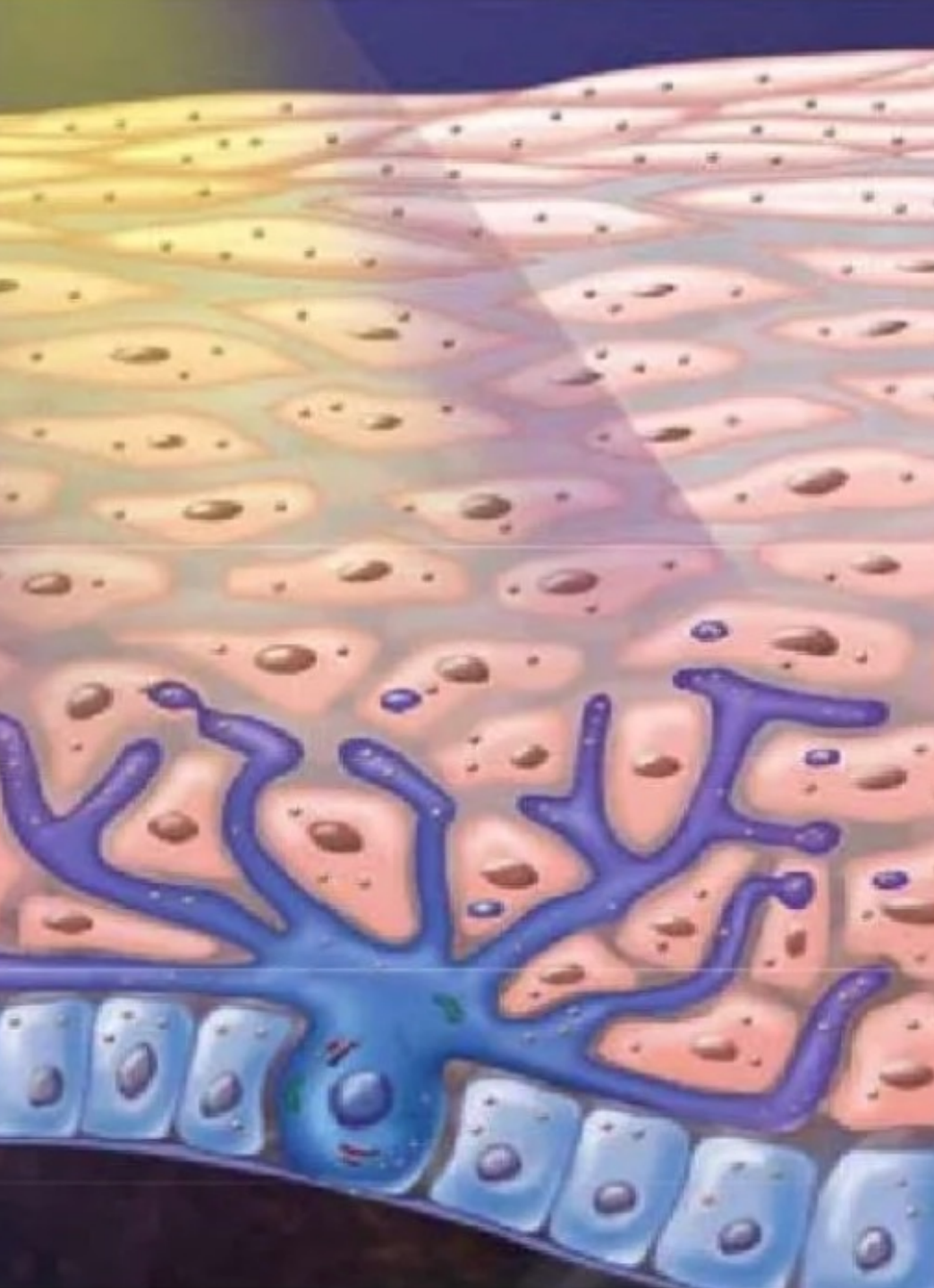


Photo-Aging: Acceleration of skin maturity

The reasons for the Photo-damage are:

- **Exposure to UVA/UVB rays**
- **Oxidative stress** (from free-radicals)
- **Pollution, dust, gas, and heavy metals** (from environment)





Melanocytes Cells

- Melanocytes Cells are **responsible for melanin production**
- Melanocytes are approximately 1% to 2% of all epidermal cells, but they can double when the skin is exposed to the sun



Hyperpigmentation due to skin aging

Characteristics of Mature Skin:

- Thinner and drier
- Skin structure less organized
- The skin becomes delicate and prone to sensitivity and irritation
- Melanin production increases
- Inflammatory mediators solicited due to irritated skin that create abnormal production of melanin.



JetPeel for Hyperpigmentation

- Renewing and rejuvenating skin cells
- Decrease the agglomeration of old cells
- Protect the skin barrier
- Improve skin structure
- Counteract free radicals
- Lightening the existing hyperpigmentation

JetPeel Treatment Sequence

STEP
1

LYMPHATIC MASSAGE

Relaxing massage for detoxifying the skin and stimulating micro-circulation

STEP
2

EXFOLIATION

Preps the skin to receive the nourishment from the following infusion treatment

STEP
3

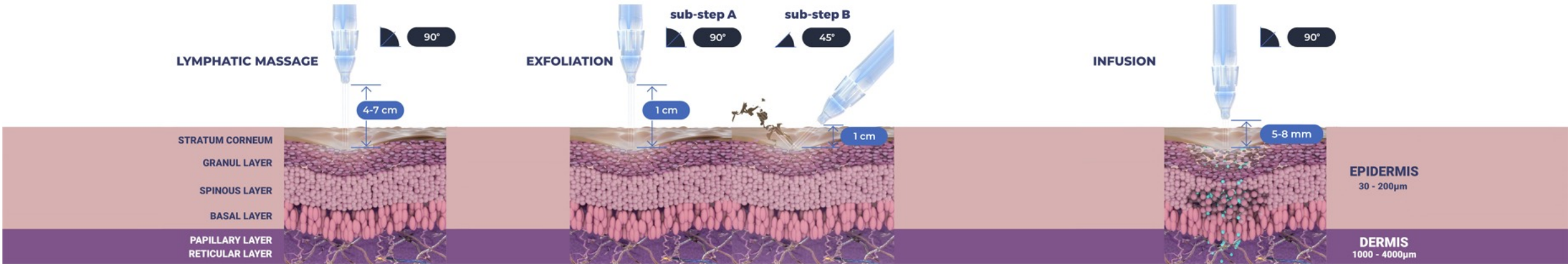
INFUSION

Deep, effective delivery of active ingredients into the skin

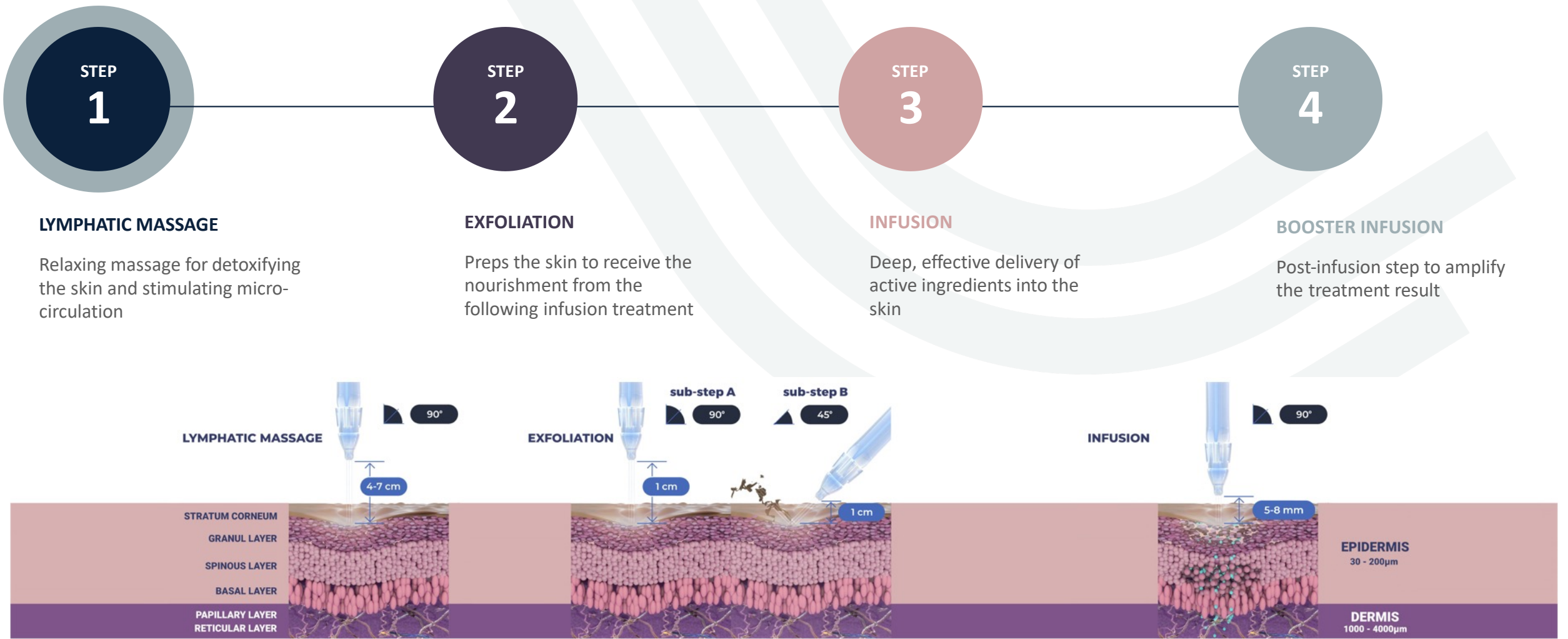
STEP
4

BOOSTER INFUSION

Post-infusion step to amplify the treatment result



Step 1: Lymphatic Massage





JetCare HYDRO

High concentration of:

Organic aloe vera, and hyaluronic acid, which contributes to reinforcing and hydrating the skin barrier.

The solution has a powerful effect on:

- Moisturising and hydrating
- Antioxidant
- Healing effect
- Cells renewal

Step 2: Exfoliation

STEP
1

LYMPHATIC MASSAGE

Relaxing massage for detoxifying the skin and stimulating micro-circulation

STEP
2

EXFOLIATION

Preps the skin to receive the nourishment from the following infusion treatment

STEP
3

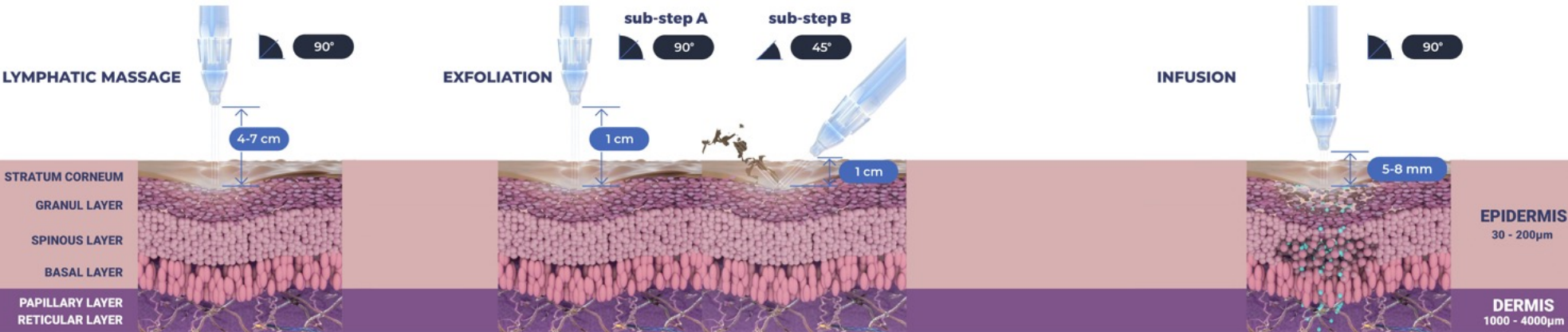
INFUSION

Deep, effective delivery of active ingredients into the skin

STEP
4

BOOSTER INFUSION

Post-infusion step to amplify the treatment result





JetCare – Renewal Care GLYCOLIC ACID

Contains:

Glycolic acid, Organic Aloe Vera, Pro-vitamin B5-
Panthenol

Promotes:

- Cell turnover
- Removal of dead cells
- Rejuvenation
- Lightening hyperpigmentation

Glycolic Acid 5% - ideal for delicate to normal skin

Glycolic Acid 10% - ideal for normal to oily skin

Glycolic Acid 16% - ideal for mature skin



JetCare – Renewal Care **MANDELIC & SALICYLIC**

The gentlest way to achieve an **exfoliating** and **resurfacing effect**.

This solution is ideal to **treat hyperpigmentation** on sensitive and very **sensitive skin** and **melasma**.

Contains:

AHA & BHA

Mandelic acid

Salicylic acid

Fruit Extract AHA natural source of Malic, Glycolic and Lactic acids

Step 3: Infusion

STEP
1

LYMPHATIC MASSAGE

Relaxing massage for detoxifying the skin and stimulating micro-circulation

STEP
2

EXFOLIATION

Preps the skin to receive the nourishment from the following infusion treatment

STEP
3

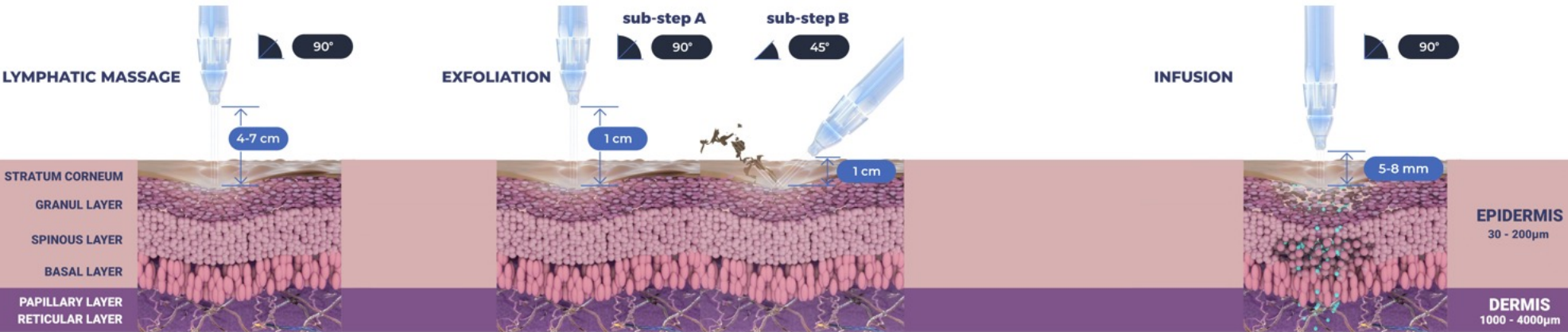
INFUSION

Deep, effective delivery of active ingredients into the skin

STEP
4

BOOSTER INFUSION

Post-infusion step to amplify the treatment result





JetCare – Selective Care **LIGHTENING**

Promotes:

- Lightening the existing dark spots
- Illumination of skin tone
- Antioxidant effect

Contains:

Alpha Arbutin(α -Arbutin), Niacinamide(Vit. B₃), Beta-White (β -White) Alpaflor[®] Gigawhite, and Stay –C[®]

Step 4: Booster Infusion

1

LYMPHATIC MASSAGE

Relaxing massage for detoxifying the skin and stimulating micro-circulation

STEP
2

EXFOLIATION

Preps the skin to receive the nourishment from the following infusion treatment

STEP
3

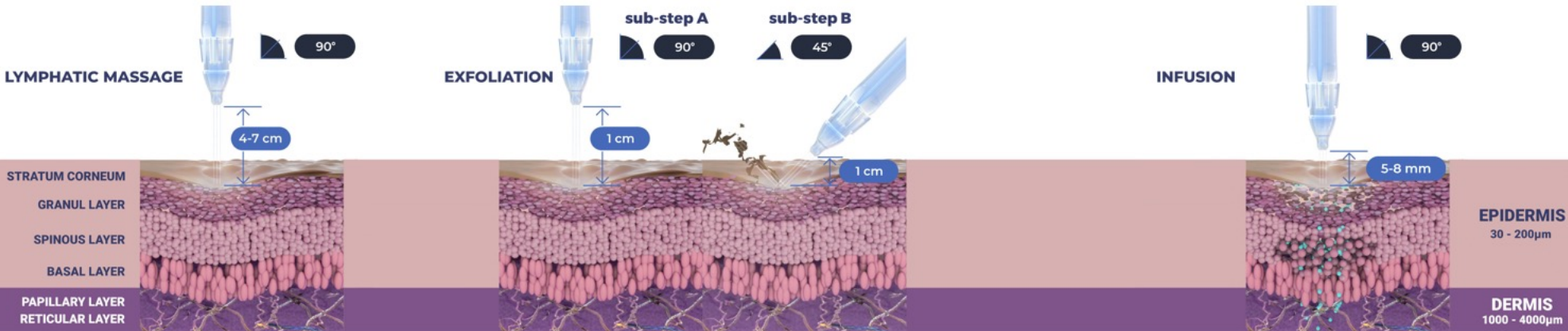
INFUSION

Deep, effective delivery of active ingredients into the skin

STEP
4

BOOSTER INFUSION

Post-infusion step to amplify the treatment result





JetCare – Boost Series **GLOW (Vitamin C)**

Promotes:

- Antioxidantization
- Skin protection from UVA and UVB rays
- Collagen production
- Lightening dark spots
- Improved skin tone for a more even appearance
- Restoration of the natural glow of the skin

Contains:

Stay –C® and Fruit Extract AHAs

Lightening and Pigmentation Treatments by Skin Characteristics

LIGHTENING AND PIGMENTATION - YOUNG SKIN

SKIN TYPE	1st Treatment	2nd Treatment	3rd Treatment
Normal	Treatment Guideline 16 with JetCare Boost - Hydrate	Treatment Guideline 13 with JetCare Boost - Regenerate	Treatment Guideline 1 with JetCare Boost - Tight
Dry	Treatment Guideline 16 with JetCare Boost - Hydrate	Treatment Guideline 13 with JetCare Boost - Regenerate	Treatment Guideline 4 with JetCare Boost - Tight
Oily	Treatment Guideline 16 with JetCare Boost - Hydrate	Treatment Guideline 14 with JetCare Boost - Regenerate	Treatment Guideline 1 with JetCare Boost - Tight
Sensitive	Treatment Guideline 16 with JetCare Boost - Hydrate	Treatment Guideline 13 with JetCare Boost - Regenerate	Treatment Guideline 4 with JetCare Boost - Tight

4th Treatment	5th Treatment	6th Treatment	Maintenance Treatments (every 3-4 weeks)
Treatment Guideline 16 with JetCare Boost - Hydrate	Treatment Guideline 8 with JetCare Boost - Glow	Treatment Guideline 9 with JetCare Boost - Regenerate	Treatment Guideline 13 with JetCare Boost - Hydrate
Treatment Guideline 16 with JetCare Boost - Hydrate	Treatment Guideline 8 with JetCare Boost - Glow	Treatment Guideline 13 with JetCare Boost - Hydrate	Treatment Guideline 13 with JetCare Boost - Hydrate
Treatment Guideline 14 with JetCare Boost - Hydrate	Treatment Guideline 8 with JetCare Boost - Glow	Treatment Guideline 10 with JetCare Boost - Regenerate	Treatment Guideline 14 with JetCare Boost - Hydrate
Treatment Guideline 16 with JetCare Boost - Hydrate	Treatment Guideline 8 with JetCare Boost - Glow	Treatment Guideline 13 with JetCare Boost - Hydrate	Treatment Guideline 13 with JetCare Boost - Hydrate

LIGHTENING & PIGMENTATION – MATURE SKIN

SKIN TYPE	1st Treatment	2nd Treatment	3rd Treatment
Normal	Treatment Guideline 13 with JetCare Boost - Hydrate	Treatment Guideline 14 with JetCare Boost - Regenerate	Treatment Guideline 3 with JetCare Boost - Tight
Dry	Treatment Guideline 16 with JetCare Boost - Hydrate	Treatment Guideline 14 with JetCare Boost - Regenerate	Treatment Guideline 1 with JetCare Boost - Tight
Oily	Treatment Guideline 14 with JetCare Boost - Hydrate	Treatment Guideline 15 with JetCare Boost - Regenerate	Treatment Guideline 2 with JetCare Boost - Tight
Sensitive	Treatment Guideline 16 with JetCare Boost - Hydrate	Treatment Guideline 13 with JetCare Boost - Regenerate	Treatment Guideline 1 with JetCare Boost - Tight

4th Treatment	5th Treatment	6th Treatment	Maintenance Treatments (every 3-4 weeks)
Treatment Guideline 14 with JetCare Boost - Regenerate	Treatment Guideline 29 with JetCare Boost - Hydrate	Treatment Guideline 10 with JetCare Boost - Regenerate	Treatment Guideline 14 with JetCare Boost - Hydrate
Treatment Guideline 14 with JetCare Boost - Regenerate	Treatment Guideline 29 with JetCare Boost - Hydrate	Treatment Guideline 14 with JetCare Boost - Hydrate	Treatment Guideline 14 with JetCare Boost - Hydrate
Treatment Guideline 14 with JetCare Boost - Regenerate	Treatment Guideline 31 with JetCare Boost - Hydrate	Treatment Guideline 14 with JetCare Boost - Hydrate	Treatment Guideline 15 with JetCare Boost - Hydrate
Treatment Guideline 13 with JetCare Boost - Regenerate	Treatment Guideline 29 with JetCare Boost - Hydrate	Treatment Guideline 13 with JetCare Boost - Hydrate	Treatment Guideline 13 with JetCare Boost - Hydrate

JetPeel by TavTech

The perfect trio combining:



The enduring
JetPro device



The original patented
JetPeel handpieces



The premium
JetCare solutions

Designed exclusively for use together to deliver outstanding results



JETPEEL

Thank you

