

Red Skin Relief

Presentation by: Laura Masini, International Trainer, TavTech

June 2022





Red Skin: Symptoms

- **Frequent flushed skin**
- **Concentrated or persistent redness** - central area of the face, forehead, nose, cheeks, chin and décolleté
- **Small red lines** under the skin appear as visible blood vessels

Difference between sensitive and sensitized skin

Sensitive skin is easily irritated, may lead to redness, flaking, dryness, itching, burning.

Sensitive or inflamed skin can affect anyone and at any time. Even mature skin may face this problem frequently.



Sensitized skin is a temporary skin condition.

Caused by use of incorrect skincare products, invasive treatments, over exfoliation, dehydration, medications, and excessive solar exposure.

Main characteristics of sensitive skin

Not enough skin hydration

Inadequate skin barrier protection

Developed skin aggression

Skin becomes irritated, inflamed, dry and red.

When the redness is frequent, capillaries become damaged and lead to couperose





Red Cheeks

Red cheeks can be a symptom of couperose and rosacea.

Couperose is skin inflammation that manifests with red spots and broken capillaries.

Couperose can evolve into **rosacea** with red patches on the face, and can manifest acne-like pimples and pustules.



What is couperose

Couperose is a vascular skin condition that affects both large and small blood vessels. Couperose appears as localized redness in specific areas.

Normally blood vessels with the passage of blood repeatedly swell and deflate.

Sometimes, capillaries can lose elasticity, causing dilated and visible spider veins on the face.



If you do not treat sensitive and couperose skin correctly, then red spots may continue to multiply, and it becomes increasingly difficult to camouflage them.



JetPeel treatment has anti-inflammatory, repairing and protective effects on sensitive, skin by offering a non-invasive skin procedure, no skin contact, a totally safe and relaxing treatment with immediate benefits and results.

JetPeel Treatment Sequence

STEP
1

LYMPHATIC MASSAGE

Relaxing massage for detoxifying the skin and stimulating micro-circulation

STEP
2

EXFOLIATION

Preps the skin to receive the nourishment from the following infusion treatment

STEP
3

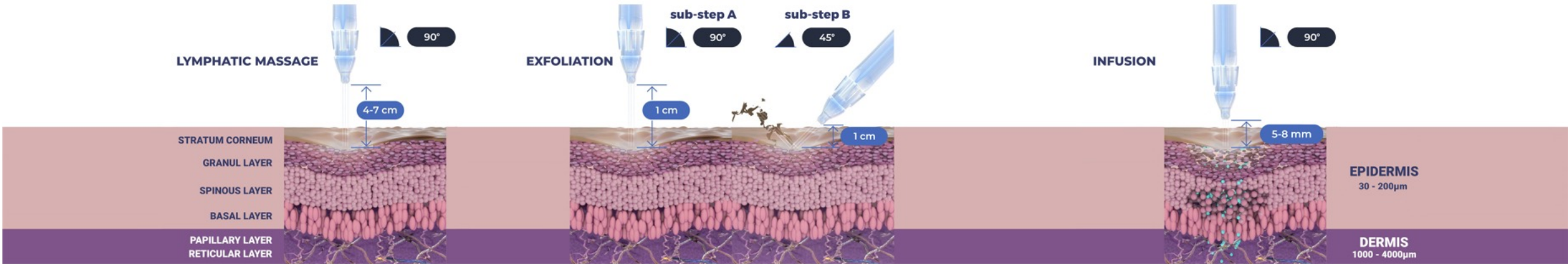
INFUSION

Deep, effective delivery of active ingredients into the skin

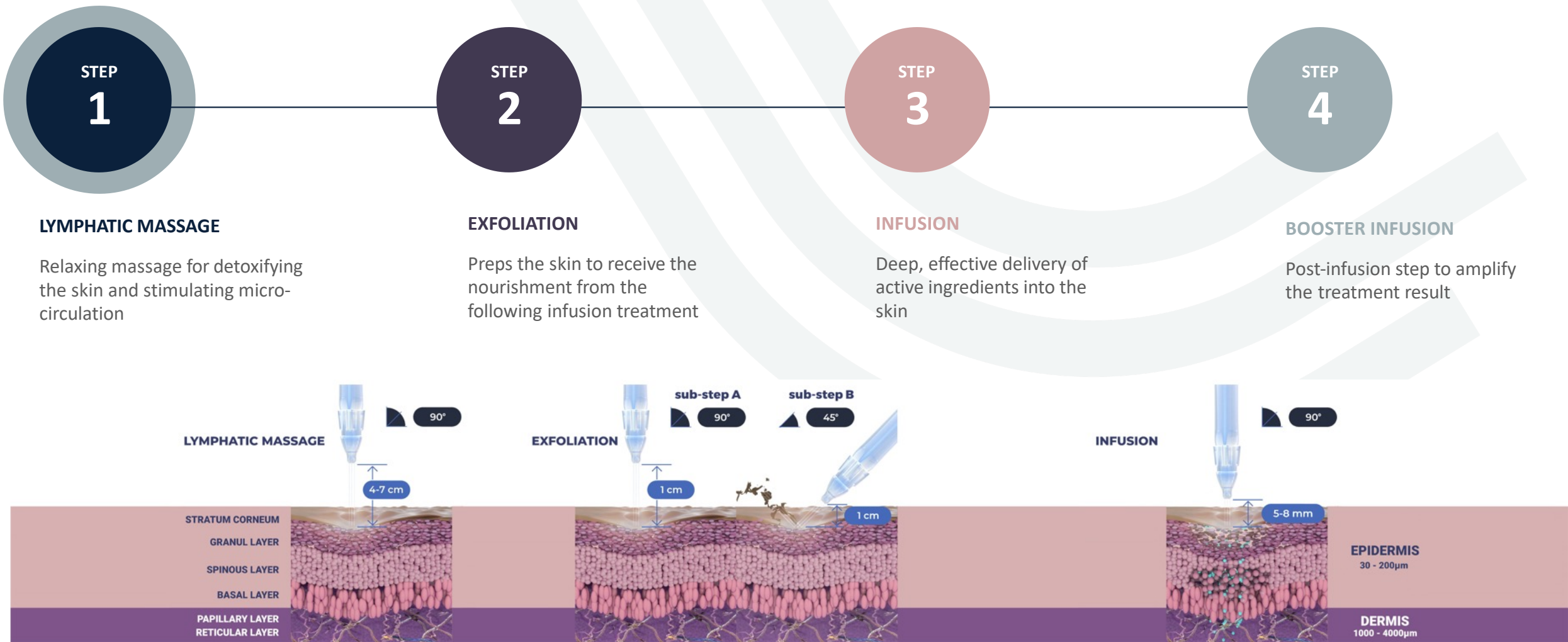
STEP
4

BOOSTER INFUSION

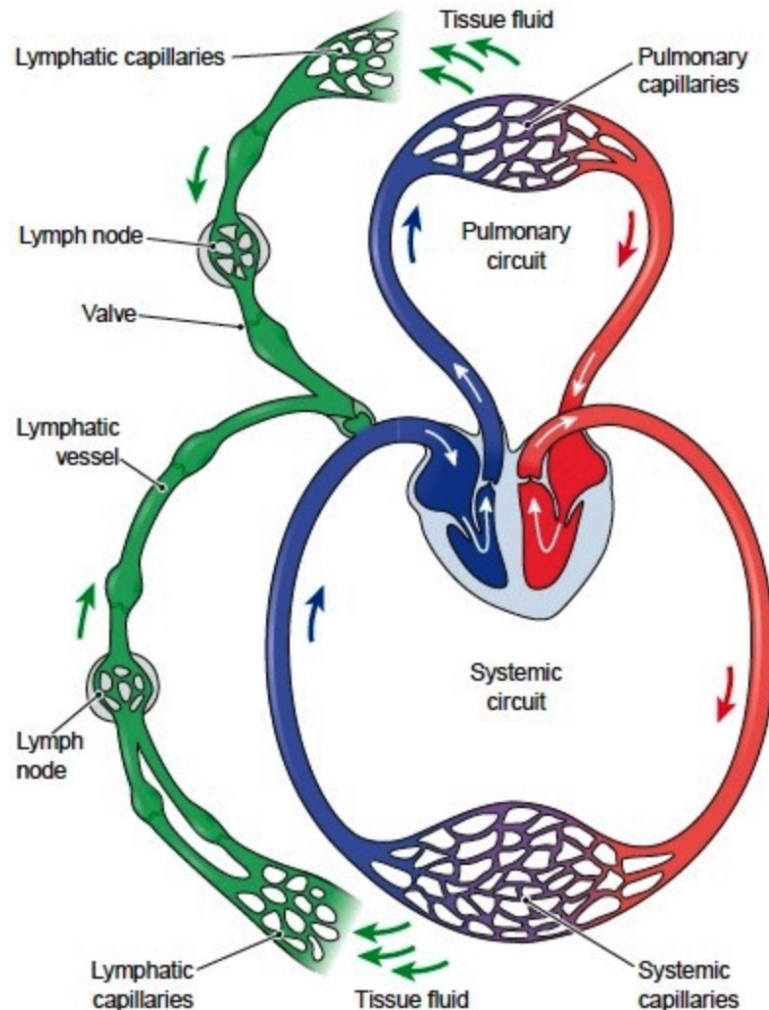
Post-infusion step to amplify the treatment result



Step 1: Lymphatic Massage



JetPeel Lymphatic Massage Benefits



- The cool jet stream from the JetPeel treatment contributes to the healing, soothing and glowing of the skin.
- Improves micro-circulation, reduces swelling especially as result of skin congestion.
- Lymphatic massage can also contribute to reducing heat in inflamed skin.

JetCare Hydro!



JetCare HYDRO

Contains: high concentration of Hyaluronic Acid and organic Aloe Vera

Hyaluronic acid: restores and balances the hydrolipidic film

Aloe Vera: soothes and moisturises the skin

Step 2: Exfoliation

STEP
1

LYMPHATIC MASSAGE

Relaxing massage for detoxifying the skin and stimulating micro-circulation

STEP
2

EXFOLIATION

Preps the skin to receive the nourishment from the following infusion treatment

STEP
3

INFUSION

Deep, effective delivery of active ingredients into the skin

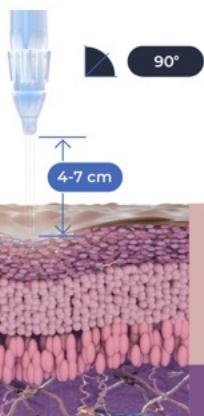
STEP
4

BOOSTER INFUSION

Post-infusion step to amplify the treatment result

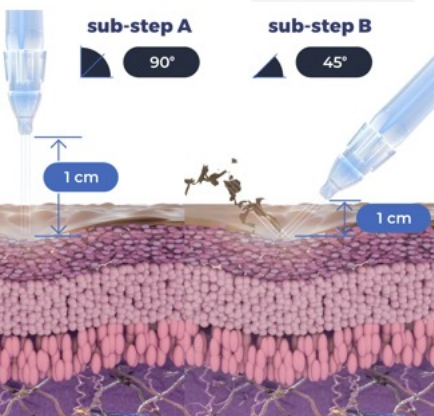
LYMPHATIC MASSAGE

STRATUM CORNEUM
GRANUL LAYER
SPINOUS LAYER
BASAL LAYER
PAPILLARY LAYER
RETICULAR LAYER



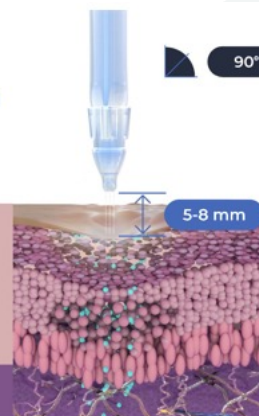
EXFOLIATION

STRATUM CORNEUM
GRANUL LAYER
SPINOUS LAYER
BASAL LAYER
PAPILLARY LAYER
RETICULAR LAYER



INFUSION

STRATUM CORNEUM
GRANUL LAYER
SPINOUS LAYER
BASAL LAYER
PAPILLARY LAYER
RETICULAR LAYER



EPIDERMIS
30 - 200µm

DERMIS
1000 - 4000µm

The ultimate gentle
exfoliating experience.



Renewal Care – MANDELIC & SALICYLIC

The gentlest way to achieve a soft and effective exfoliation, with a blend of AHA & BHA.

The calming and exfoliating properties of **Mandelic Acid** make it a powerful ally for sensitive and couperose skin.

Salicylic Acid helps to decrease oil and inflammation.

Step 3: Infusion

STEP
1

LYMPHATIC MASSAGE

Relaxing massage for detoxifying the skin and stimulating micro-circulation

STEP
2

EXFOLIATION

Preps the skin to receive the nourishment from the following infusion treatment

STEP
3

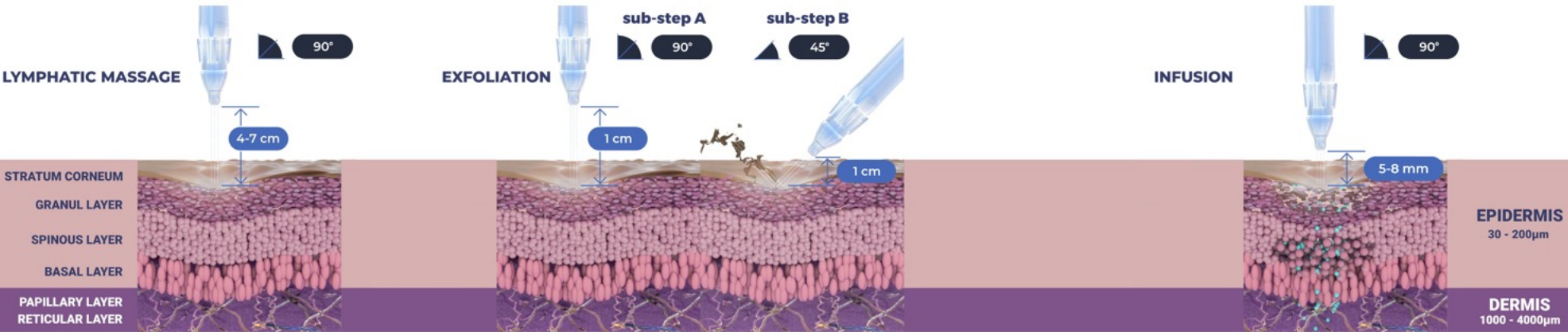
INFUSION

Deep, effective delivery of active ingredients into the skin

STEP
4

BOOSTER INFUSION

Post-infusion step to amplify the treatment result





Selective Care SOOTHING

Azeoglicina® (Azelaic Acid + Glycine)

Lightening, sebum normalizing, hydrating, elasticizing, moisturizing and anti-inflammatory

Ronacare® Troxerutin

Protect the skin barrier, anti-oxidant, maintain constant level of elastin and collagen, protect skin lipids, improve blood vessel walls and make them elastic. Offer certain prevention against spider veins

Nordic Cotton Extract

Contains minerals and polyphenols.
Powerful remineralisation, detoxifying and soothing

Niacinamide (multifunctional ingredient, derivative of niacin or vitamin B₃)

Anti-inflammatory, brightening and soothing

Sodium Hyaluronic acid

Increase skin hydration, reduce dryness, anti-aging, and anti-inflammation.

Organic Aloe Vera antioxidant, antibacterial, wound healing, soothing, moisturizing, and slowing down aging signs

Anti-Aging Care WIDE RANGE HYALURONIC ACID

Hyaluronic Acid

Unique formula with 5 molecular weights of HA.

Protect against dehydration, interacts with structure proteins, improves skin architecture and its integrity, supports fibroblast proliferation, reduces appearance of wrinkles, reduces inflammation.

Regu-age®

Active complex consists of specifically purified soy and rice peptides and proteins, specifically to address puffiness, improving micro-circulation, and protecting the integrity of the collagen and elastin fibers.



Step 4: Booster Infusion

1

LYMPHATIC MASSAGE

Relaxing massage for detoxifying the skin and stimulating micro-circulation

STEP
2

EXFOLIATION

Preps the skin to receive the nourishment from the following infusion treatment

STEP
3

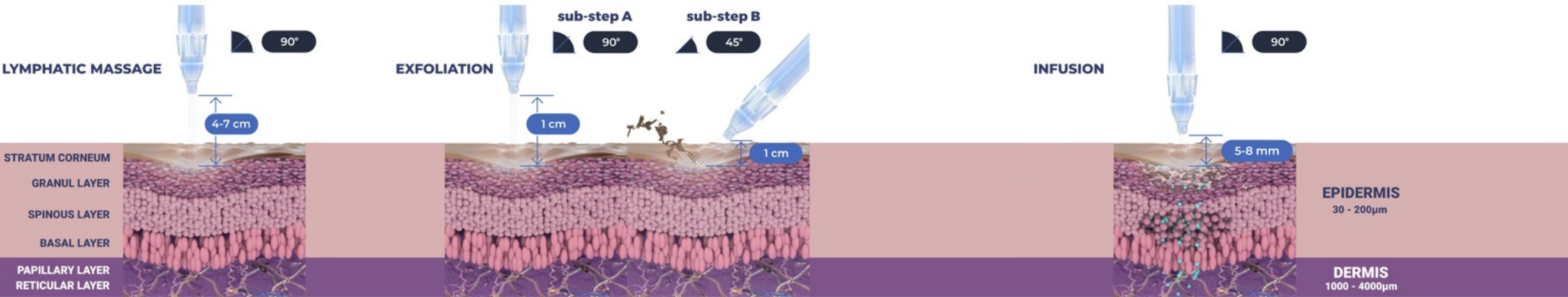
INFUSION

Deep, effective delivery of active ingredients into the skin

STEP
4

BOOSTER INFUSION

Post-infusion step to amplify the treatment result





JetCare Boost TIGHT

Complex of 3 vitamin B derivatives:

B₃, B₅, B₇

Role in the skin:

deep penetrating moisturizer,
stimulates epithelisation,
wound healing effect,
anti-inflammation, improves
hydration and skin flexibility



JetCare Boost REGENERATE

Vitamin A + E

Strengthen the barrier function, minimise dryness, anti-inflammatory, healing cell damage, anti-oxidant and reduces redness.

Pentavitin®

The natural skincare ingredient that nourishes and moisturizes the skin.

Ragu-age®

Improve the dermis integrity.

Roman Chamomile Extract

Help address redness, wound healing and soothe sensitive skin.

Couperose and Sensitive Skin Treatments by Skin Characteristics

COUPEROSE AND SENSITIVE - YOUNG SKIN

| SKIN TYPE | 1st Treatment | 2nd Treatment | 3rd Treatment |
|-----------|--|---|---|
| Normal | Treatment Guideline 24 with JetCare Boost - Regenerate | Treatment Guideline 21 with JetCare Boost - Tight | Treatment Guideline 1 with JetCare Boost - Glow |
| Dry | Treatment Guideline 24 with JetCare Boost - Regenerate | Treatment Guideline 21 with JetCare Boost - Tight | Treatment Guideline 1 with JetCare Boost - Glow |
| Oily | Treatment Guideline 24 with JetCare Boost - Regenerate | Treatment Guideline 21 with JetCare Boost - Tight | Treatment Guideline 1 with JetCare Boost - Glow |
| Sensitive | Treatment Guideline 24 with JetCare Boost - Regenerate | Treatment Guideline 21 with JetCare Boost - Tight | Treatment Guideline 4 with JetCare Boost - Glow |

| 4th Treatment | 5th Treatment | 6th Treatment | Maintenance Treatments (every 3-4 weeks) |
|--|--|---|---|
| Treatment Guideline 16 with JetCare Boost - Regenerate | Treatment Guideline 8 with JetCare Boost - Hydrate | Treatment Guideline 9 with JetCare Boost - Regenerate | Treatment Guideline 21 with JetCare Boost - Hydrate |
| Treatment Guideline 16 with JetCare Boost - Regenerate | Treatment Guideline 8 with JetCare Boost - Hydrate | Treatment Guideline 29 with JetCare Boost - Hydrate | Treatment Guideline 21 with JetCare Boost - Hydrate |
| Treatment Guideline 14 with JetCare Boost - Regenerate | Treatment Guideline 8 with JetCare Boost - Hydrate | Treatment Guideline 9 with JetCare Boost - Regenerate | Treatment Guideline 21 with JetCare Boost - Hydrate |
| Treatment Guideline 16 with JetCare Boost - Regenerate | Treatment Guideline 8 with JetCare Boost - Hydrate | Treatment Guideline 29 with JetCare Boost - Hydrate | Treatment Guideline 21 with JetCare Boost - Hydrate |

COUPEROSE & SENSITIVE – MATURE SKIN

| SKIN TYPE | 1st Treatment | 2nd Treatment | 3rd Treatment |
|-----------|--|---|---|
| Normal | Treatment Guideline 21 with JetCare Boost - Regenerate | Treatment Guideline 22 with JetCare Boost - Tight | Treatment Guideline 1 with JetCare Boost - Glow |
| Dry | Treatment Guideline 24 with JetCare Boost - Regenerate | Treatment Guideline 21 with JetCare Boost - Tight | Treatment Guideline 1 with JetCare Boost - Glow |
| Oily | Treatment Guideline 22 with JetCare Boost - Regenerate | Treatment Guideline 23 with JetCare Boost - Tight | Treatment Guideline 2 with JetCare Boost - Glow |
| Sensitive | Treatment Guideline 24 with JetCare Boost - Regenerate | Treatment Guideline 21 with JetCare Boost - Tight | Treatment Guideline 1 with JetCare Boost - Glow |

| 4th Treatment | 5th Treatment | 6th Treatment | Maintenance Treatments (every 3-4 weeks) |
|--|---|--|---|
| Treatment Guideline 14 with JetCare Boost - Regenerate | Treatment Guideline 29 with JetCare Boost - Hydrate | Treatment Guideline 9 with JetCare Boost - Regenerate | Treatment Guideline 21 with JetCare Boost - Hydrate |
| Treatment Guideline 14 with JetCare Boost - Regenerate | Treatment Guideline 29 with JetCare Boost - Hydrate | Treatment Guideline 24 with JetCare Boost - Glow | Treatment Guideline 21 with JetCare Boost - Hydrate |
| Treatment Guideline 14 with JetCare Boost - Regenerate | Treatment Guideline 29 with JetCare Boost - Hydrate | Treatment Guideline 11 with JetCare Boost - Regenerate | Treatment Guideline 21 with JetCare Boost - Hydrate |
| Treatment Guideline 13 with JetCare Boost - Regenerate | Treatment Guideline 29 with JetCare Boost - Hydrate | Treatment Guideline 24 with JetCare Boost - Glow | Treatment Guideline 21 with JetCare Boost - Hydrate |

JetPeel by TavTech

The perfect trio combining:



**The enduring
JetPro device**



**The original patented
JetPeel handpieces**



**The premium
JetCare solutions**

Designed exclusively for use together to deliver outstanding results



JETPEEL

Thank you

