

Clearing Up Acne Signs

Presentation by: Laura Masini, International Trainer, TavTech

May 2022



What is Acne



Acne is inflammation due to excessive functioning of the sebaceous glands.

Typical consequences: alternate pH, skin barrier no longer in balance, dry and oily skin, enlarged pores, blackheads, whiteheads, pustules, cysts, inflammation.

Acne can manifest itself in different ways.
Depending on the degree of severity: it can be mild, moderate or severe.

Mild Acne



Moderate Acne



Severe Acne





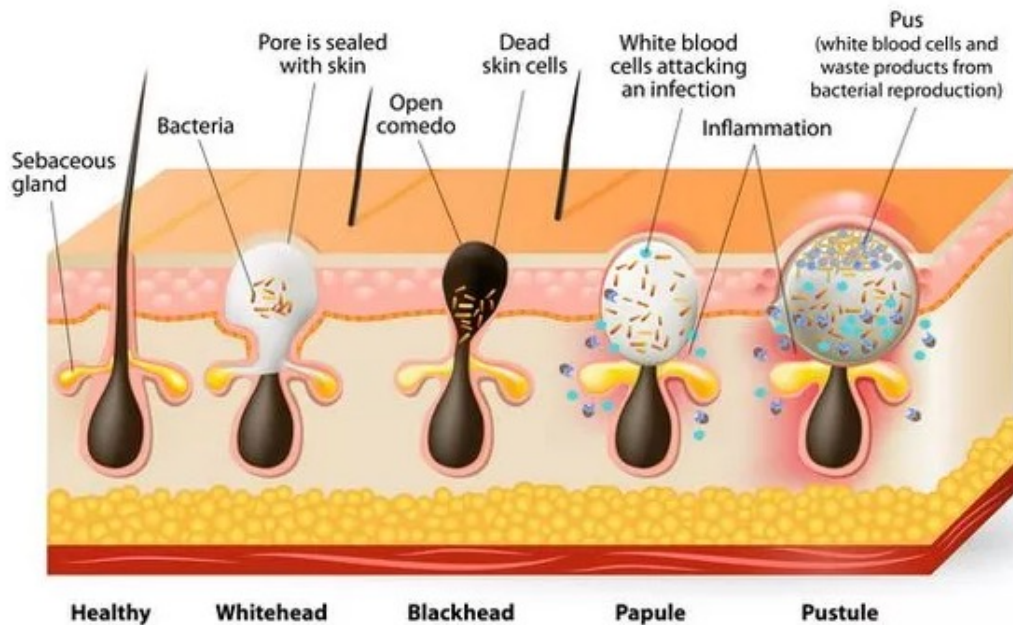
Acne affects about 90% of adolescents and over 45% of adults.

Some adults continue to get acne into their 30s, 40s, and 50s. It is even possible to get acne for the first time as an adult.

COVID also increases acne in the form of “Maskne”

Modern technology also causes “cell phone acne”

Acne symptoms



Acne can appear with:

- Whiteheads
- Blackheads
- Pimples
- Nodules, cysts,
- Inflammation of the sebaceous glands
- Bacteria

Acne can bring uncomfortable consequences such as:

- Post-inflammatory hyperpigmentation
- Scars

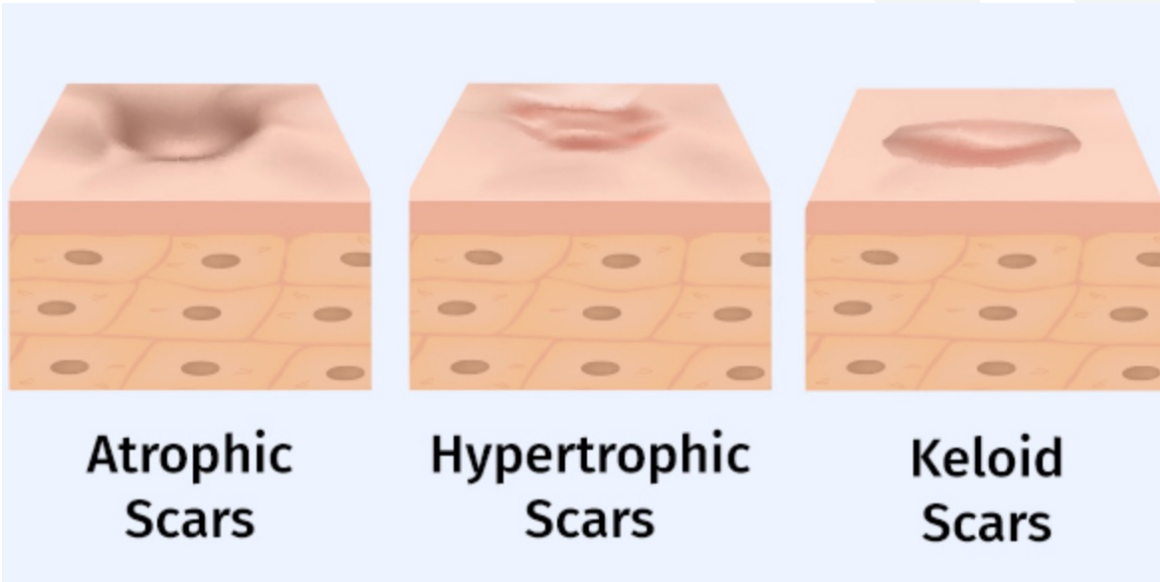
Acne scars



Acne scars are a consequence of inflammatory acne lesions.

When the inflammatory effect of acne degenerates, has a prolonged duration, or is aggravated by infections, the epidermis (the most superficial layer of the skin) is unable to replace the scarred areas which may then take on a 'pitted' appearance.

Acne scars types



- **Atrophic:** they are the most common, appearing as small oval, quadrangular or triangular shape 'dimples'
- **Hypertrophic:** they appear hard and raised on the skin.
- **Keloid:** when a hypertrophic scar continues to grow and spreads beyond the lesion. These lesions are purple-red when they are new, then later becoming opaque. This form of scar is only occasionally caused by acne

Acne scars effects



Acne scars cause:

- Discomfort and embarrassment but it is not just an aesthetic problem.
- Blood circulation and hydration are compromised.
- The skin is less nourished is more prone to dehydration and aging.

In many cases, scars also appear due to removal of blackheads, whiteheads, pimples and other impurities with your fingers or any other tool.

Post-acne spots (Hyper-pigmentation)



Hyper-pigmentation due to inflammatory process:

We recognize two types of acne spots:

- **Red spots**
- **Pigmented spots**

Red spots are the most frequent. After a few months, this type tends to fade, but red spots exposed to the sun can turn into pigmented spots

Why JetPeel is safe and effective on acne?



- Never touches the skin
- No downtime, no discomfort, no pain, no needles
- Improves micro-circulation, stimulates cellular activity and improves skin tissue elasticity and firmness
- Cleans pores and detoxes the skin
- Gently exfoliates, rebalances sebaceous glands, counteracts bacteria, accelerates the healing process, and reduces inflammatory states, acne breakouts and acne signs
- Helps prevent scars formation, promotes the natural production of collagen, and assists in repairing damaged skin cells
- Improves skin appearance and skin texture

JetPeel Treatment Sequence

STEP
1

LYMPHATIC MASSAGE

Relaxing massage for detoxifying the skin and stimulating micro-circulation

STEP
2

EXFOLIATION

Preps the skin to receive the nourishment from the following infusion treatment

STEP
3

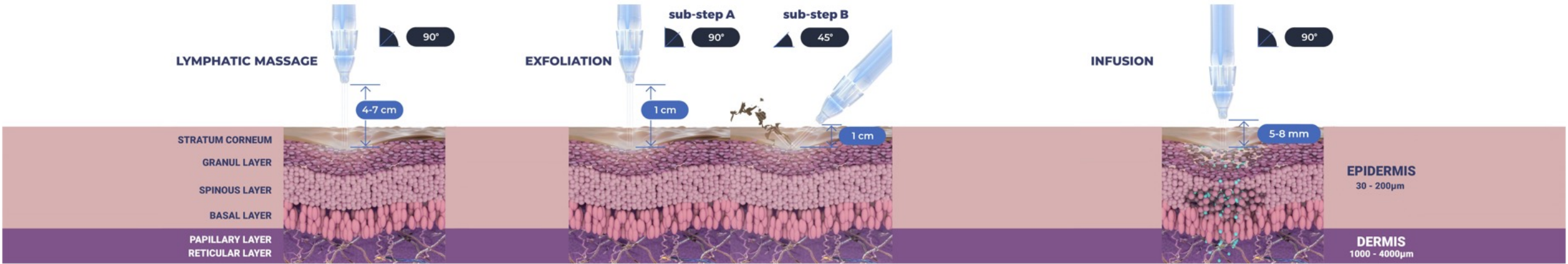
INFUSION

Deep, effective delivery of active ingredients into the skin

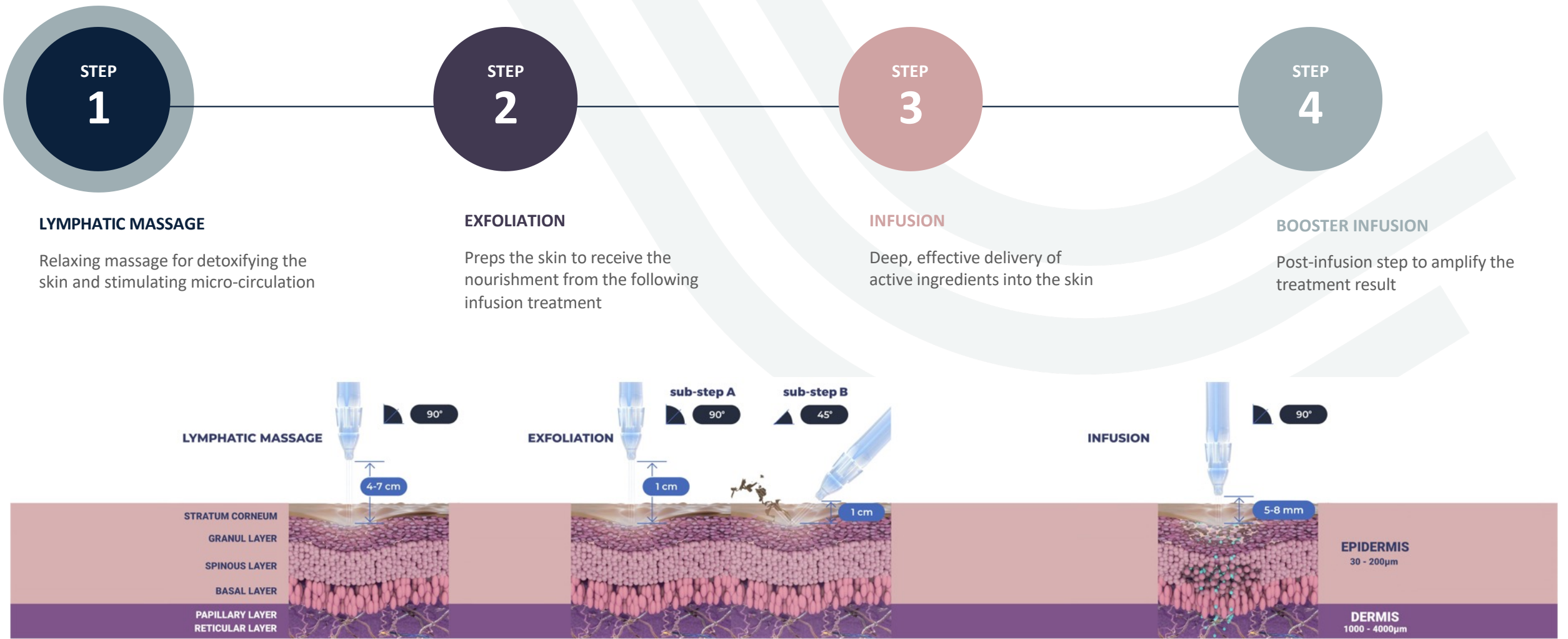
STEP
4

BOOSTER INFUSION

Post-infusion step to amplify the treatment result



Step 1: Lymphatic Massage





JetCareHYDRO



All JetPeel sessions begin with JetCare Hydro

Gentle solution formulated for the initial lymphatic massage, and to prep the skin for the deeper JetCare treatments

High concentration of Hyaluronic Acid and organic concentrated Aloe Vera

Step 2: Exfoliation

STEP
1

LYMPHATIC MASSAGE

Relaxing massage for detoxifying the skin and stimulating micro-circulation

STEP
2

EXFOLIATION

Preps the skin to receive the nourishment from the following infusion treatment

STEP
3

INFUSION

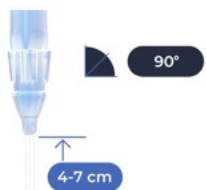
Deep, effective delivery of active ingredients into the skin

STEP
4

BOOSTER INFUSION

Post-infusion step to amplify the treatment result

LYMPHATIC MASSAGE

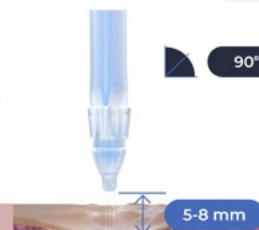


STRATUM CORNEUM
GRANUL LAYER
SPINOUS LAYER
BASAL LAYER
PAPILLARY LAYER
RETICULAR LAYER

EXFOLIATION



INFUSION



EPIDERMIS
30 - 200µm

DERMIS
1000 - 4000µm

Renewal Care Series



Glycolic Acid Series

Personalized exfoliation with Glycolic Acid 5%, 10% or 16%, Organic Aloe Vera and Pro-Vitamin B₅ Panthenol. Glycolic acid for: exfoliation, skin regeneration and smoothing. Suitable for impurities, pimples, marks and acne scars.



Mandelic & Salicylic Series

For gentle exfoliation of the skin, suitable for very sensitive skin or in the case of active acne.

Does not leave a tingling or burning sensation.

Improves the skin tone while reducing inflammatory, dilated pores and blackheads, and cleanses the skin.

Step 3: Infusion

STEP
1

LYMPHATIC MASSAGE

Relaxing massage for detoxifying the skin and stimulating micro-circulation

STEP
2

EXFOLIATION

Preps the skin to receive the nourishment from the following infusion treatment

STEP
3

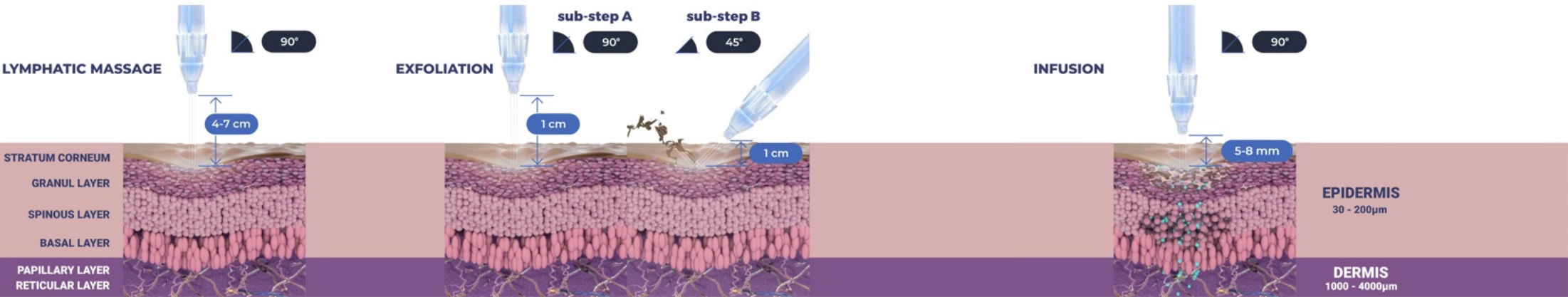
INFUSION

Deep, effective delivery of active ingredients into the skin

STEP
4

BOOSTER INFUSION

Post-infusion step to amplify the treatment result



Selective Care Series



Clear



- Sebum-rebalance
- Soothing action
- Counteract bacteria
- Reduce inflammation

Contains:

1% Neutrazen™ and 1% Salicylic Acid to help purify clogged pores

1% Niacinamide (Vit B₃)

0.3% Allantoin (soothing agent)

Acnacido-10-HAD: this omega-hydroxy acid is naturally derived from Royal Jelly.

Selective Care Series



Lightening



Reduce hyper-pigmentation

Contains: Alpha-arbutin, Niacinamide (Vit B₃), Beta White™, Salicylic acid, Stay C®, Giga White blend

Selective Care Series



Growth Factor



- Maintain the skin healthy and strong
- Assist in repairing damaged skin
- Wound healing effect
- Improve firmness and elasticity
- Protect the skin functions
- Regulate cellular proliferation and regeneration
- Counteract acne scars

Contains: EGF (Epidermal Growth Factor), Vitamin B9, Niacinamide and Betaine.

Anti Aging Care Series



Wide Range Hyaluronic Acid



- Reduce acne scars
- Maintain natural hydration
- Improve skin appearance and skin texture
- Helps prevent the marks that acne leaves on the skin
- Leaves the skin soft

Contains: five molecular weights of HA and Regu-age®, a synergistic blend of patented peptides and proteins.

Step 4: Booster Infusion



LYMPHATIC MASSAGE

Relaxing massage for detoxifying the skin and stimulating micro-circulation



EXFOLIATION

Preps the skin to receive the nourishment from the following infusion treatment



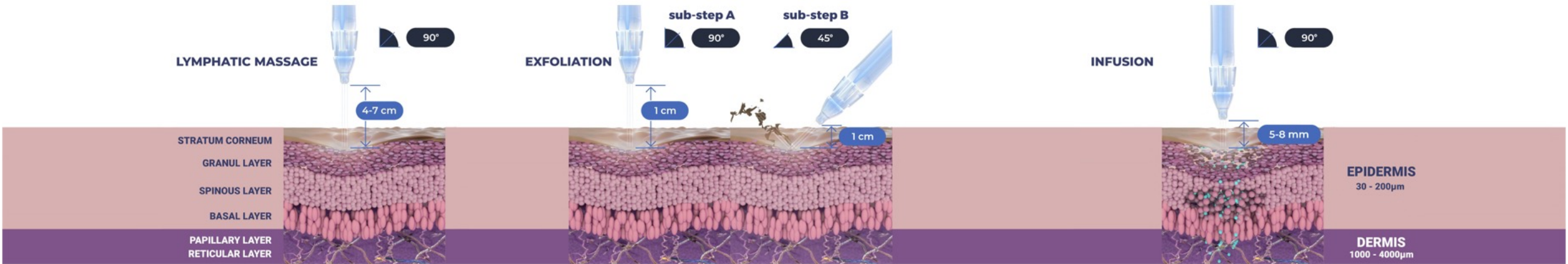
INFUSION

Deep, effective delivery of active ingredients into the skin



BOOSTER INFUSION

Post-infusion step to amplify the treatment result



JetCare Boost Set



JetCare Boost Hydrate (HA)

State-of-the-art HA for ultimate filler and volumizing effect



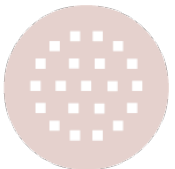
JetCare Boost Regenerate (Vit A + E)

Anti-oxidant power of Vitamins A and E for high-performance anti-aging



JetCare Boost Glow (Vit C)

Delivers the glow benefits of Vitamin C directly to the skin



JetCare Boost Tight (Vit B complex)

The firming power of Vitamins B₃, B₅, and B₇



Acne Treatments by Skin Characteristics

ACNE - YOUNG SKIN

SKIN TYPE	1st Treatment	2nd Treatment	3rd Treatment
Normal	Treatment Guideline 28 with JetCare Boost - Regenerate	Treatment Guideline 25 with JetCare Boost - Glow	Treatment Guideline 4 with JetCare Boost - Tight
Dry	Treatment Guideline 28 with JetCare Boost - Regenerate	Treatment Guideline 25 with JetCare Boost - Glow	Treatment Guideline 4 with JetCare Boost - Tight
Oily	Treatment Guideline 28 with JetCare Boost - Regenerate	Treatment Guideline 25 with JetCare Boost - Glow	Treatment Guideline 1 with JetCare Boost - Tight
Sensitive	Treatment Guideline 28 with JetCare Boost - Regenerate	Treatment Guideline 25 with JetCare Boost - Glow	Treatment Guideline 4 with JetCare Boost - Tight

4th Treatment	5th Treatment	6th Treatment	Maintenance Treatments (every 3-4 weeks)
Treatment Guideline 16 with JetCare Boost - Hydrate	Treatment Guideline 28 with JetCare Boost - Regenerate	Treatment Guideline 29 with JetCare Boost - Tight	Treatment Guideline 28 with JetCare Boost - Hydrate
Treatment Guideline 16 with JetCare Boost - Hydrate	Treatment Guideline 28 with JetCare Boost - Regenerate	Treatment Guideline 32 with JetCare Boost - Tight	Treatment Guideline 25 with JetCare Boost - Hydrate
Treatment Guideline 14 with JetCare Boost - Hydrate	Treatment Guideline 28 with JetCare Boost - Regenerate	Treatment Guideline 29 with JetCare Boost - Tight	Treatment Guideline 25 with JetCare Boost - Hydrate
Treatment Guideline 16 with JetCare Boost - Hydrate	Treatment Guideline 28 with JetCare Boost - Regenerate	Treatment Guideline 32 with JetCare Boost - Tight	Treatment Guideline 28 with JetCare Boost - Hydrate

ACNE – MATURE SKIN

SKIN TYPE	1st Treatment	2nd Treatment	3rd Treatment
Normal	Treatment Guideline 28 with JetCare Boost - Regenerate	Treatment Guideline 26 with JetCare Boost - Glow	Treatment Guideline 1 with JetCare Boost - Tight
Oily	Treatment Guideline 28 with JetCare Boost - Regenerate	Treatment Guideline 27 with JetCare Boost - Glow	Treatment Guideline 2 with JetCare Boost - Tight
Sensitive	Treatment Guideline 28 with JetCare Boost - Regenerate	Treatment Guideline 25 with JetCare Boost - Glow	Treatment Guideline 1 with JetCare Boost - Tight

4th Treatment	5th Treatment	6th Treatment	Maintenance Treatments (every 3-4 weeks)
Treatment Guideline 14 with JetCare Boost - Hydrate	Treatment Guideline 28 with JetCare Boost - Regenerate	Treatment Guideline 30 with JetCare Boost - Tight	Treatment Guideline 26 with JetCare Boost - Hydrate
Treatment Guideline 14 with JetCare Boost - Hydrate	Treatment Guideline 28 with JetCare Boost - Regenerate	Treatment Guideline 31 with JetCare Boost - Tight	Treatment Guideline 27 with JetCare Boost - Hydrate
Treatment Guideline 14 with JetCare Boost - Hydrate	Treatment Guideline 28 with JetCare Boost - Regenerate	Treatment Guideline 29 with JetCare Boost - Tight	Treatment Guideline 25 with JetCare Boost - Hydrate

Post-Acne Treatments by Skin Characteristics

POST-ACNE - YOUNG SKIN

SKIN TYPE	1st Treatment	2nd Treatment	3rd Treatment
Normal	Treatment Guideline 1 with JetCare Boost - Tight	Treatment Guideline 14 with JetCare Boost - Regenerate	Treatment Guideline 18 Boost with Wide Range HA
Dry	Treatment Guideline 1 with JetCare Boost - Tight	Treatment Guideline 13 with JetCare Boost - Regenerate	Treatment Guideline 18 Boost with Wide Range HA
Oily	Treatment Guideline 1 with JetCare Boost - Tight	Treatment Guideline 14 with JetCare Boost - Regenerate	Treatment Guideline 18 Boost with Wide Range HA
Sensitive	Treatment Guideline 1 with JetCare Boost - Tight	Treatment Guideline 13 with JetCare Boost - Regenerate	Treatment Guideline 17 Boost with Wide Range HA

4th Treatment	5th Treatment	6th Treatment	Maintenance Treatments (every 3-4 weeks)
Treatment Guideline 8 with JetCare Boost - Glow	Treatment Guideline 12 with JetCare Boost - Hydrate	Treatment Guideline 30 with JetCare Boost - Regenerate	Treatment Guideline 18 Boost with Wide Range HA
Treatment Guideline 8 with JetCare Boost - Glow	Treatment Guideline 18 Boost with Wide Range HA	Treatment Guideline 29 with JetCare Boost - Regenerate	Treatment Guideline 18 Boost with Wide Range HA
Treatment Guideline 8 with JetCare Boost - Glow	Treatment Guideline 12 with JetCare Boost - Hydrate	Treatment Guideline 30 with JetCare Boost - Regenerate	Treatment Guideline 18 Boost with Wide Range HA
Treatment Guideline 8 with JetCare Boost - Glow	Treatment Guideline 17 Boost with Wide Range HA	Treatment Guideline 29 with JetCare Boost - Regenerate	Treatment Guideline 17 Boost with Wide Range HA

POST-ACNE – MATURE SKIN

SKIN TYPE	1st Treatment	2nd Treatment	3rd Treatment
Normal	Treatment Guideline 1 with JetCare Boost - Tight	Treatment Guideline 14 with JetCare Boost - Regenerate	Treatment Guideline 18 Boost with Wide Range HA
Dry	Treatment Guideline 1 with JetCare Boost - Tight	Treatment Guideline 14 with JetCare Boost - Regenerate	Treatment Guideline 17 Boost with Wide Range HA
Oily	Treatment Guideline 2 with JetCare Boost - Tight	Treatment Guideline 14 with JetCare Boost - Regenerate	Treatment Guideline 19 Boost with Wide Range HA
Sensitive	Treatment Guideline 1 with JetCare Boost - Tight	Treatment Guideline 14 with JetCare Boost - Regenerate	Treatment Guideline 17 Boost with Wide Range HA

4th Treatment	5th Treatment	6th Treatment	Maintenance Treatments (every 3-4 weeks)
Treatment Guideline 8 with JetCare Boost - Glow	Treatment Guideline 12 with JetCare Boost - Hydrate	Treatment Guideline 30 with JetCare Boost - Regenerate	Treatment Guideline 18 Boost with Wide Range HA
Treatment Guideline 8 with JetCare Boost - Glow	Treatment Guideline 17 Boost with Wide Range HA	Treatment Guideline 30 with JetCare Boost - Regenerate	Treatment Guideline 17 Boost with Wide Range HA
Treatment Guideline 8 with JetCare Boost - Glow	Treatment Guideline 9 with JetCare Boost - Hydrate	Treatment Guideline 30 with JetCare Boost - Regenerate	Treatment Guideline 19 Boost with Wide Range HA
Treatment Guideline 8 with JetCare Boost - Glow	Treatment Guideline 17 Boost with Wide Range HA	Treatment Guideline 30 with JetCare Boost - Regenerate	Treatment Guideline 17 Boost with Wide Range HA

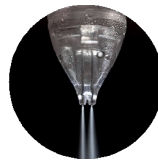
JetPeel by TavTech – the perfect trio combining:

- the enduring JetPro device,
- the original patented JetPeel handpieces, and
- the premium JetCare solutions

designed exclusively for use together to deliver outstanding results



TripleJet

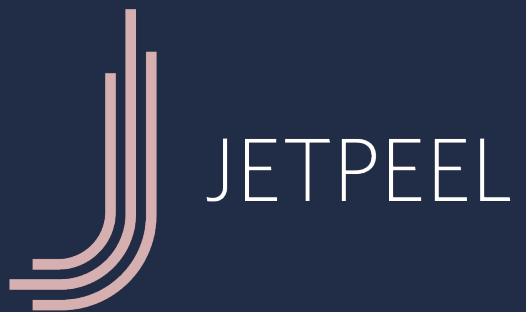


DoubleJet



SingleJet
(Magic)





Thank you

