

# SKINBOOSTERS

**Presentation by:** Laura Masini, International Trainer, TavTech  
**February 2022**



# JetPeel by TavTech – the perfect trio combining:

- the enduring JetPro device,
- the original patented JetPeel handpieces, and
- the new and improved JetCare solutions

designed exclusively for use together to deliver outstanding results



TRIPLE



DOUBLE



MAGIC







JetCare by TavTech is the first choice for cosmeticians and specialists worldwide, and the only choice for the ultimate treatment experience by JetPeel.

With the new and improved JetCare formulas, the skin feels smoother, brighter, and more beautiful than ever.



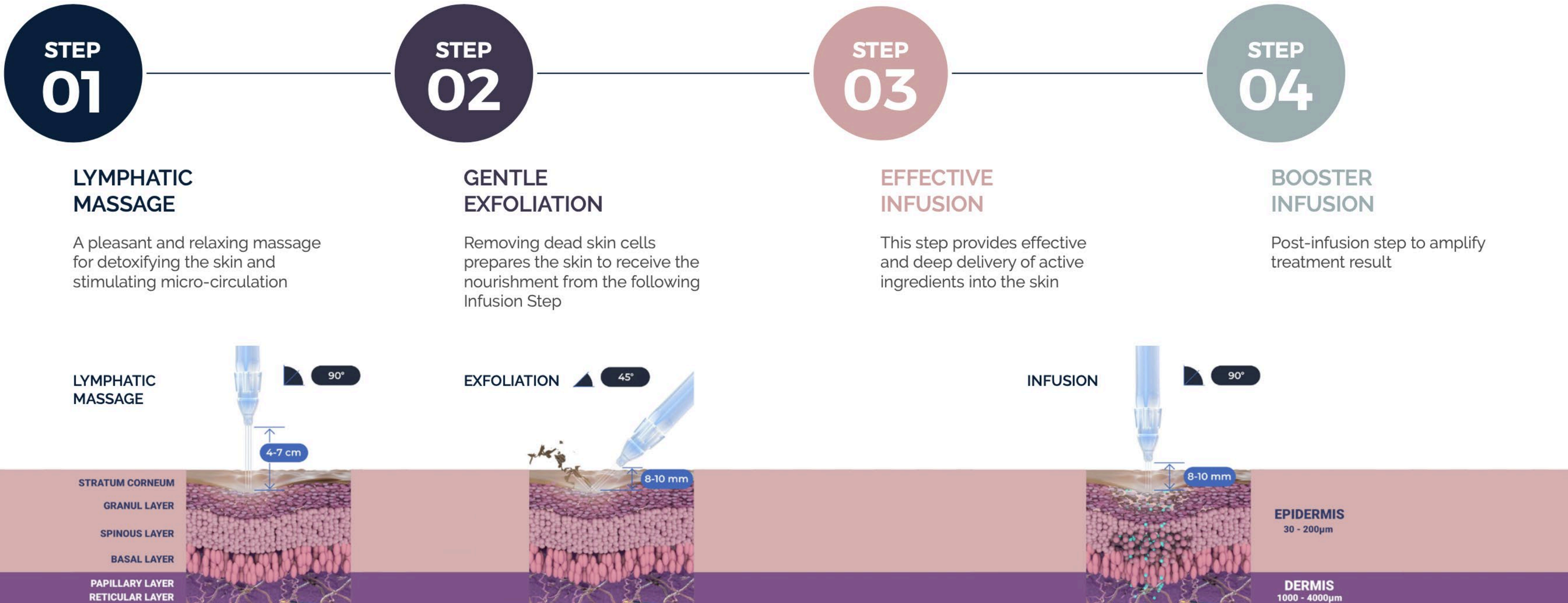
# Today we talk about JetCare Boost – JetCare's 4 Boost infusion products which complete the JetPeel treatment sequence

- **Improve skin health**
- **Minimise ageing signs**
- **Rejuvenate the skin**
- **Improving skin elasticity**





# The Treatment Sequence



## The skin undergoes changes with the passage of time



The main reasons for the aging of the skin include excess of oxidants (free radicals) and progressive loss of intrinsic Hyaluronic acid.

As it gets thinner, the skin becomes more fragile, dehydrates and its elasticity diminishes.



## JetCare's Booster Infusion line:

- Prevents premature ageing signs and boosts the skin radiance.
- Compensates for the natural loss of skin density, improves skin hydration, fills wrinkles and stimulates the auto-production of collagen and elastin.



# The Booster Infusions:



- Hydrate with a special wide-range HA for filler effect
- Regenerate with vitamins A + E for high performance anti-aging
- Glow the skin with a high concentration of vitamin C
- Tighten the skin with vitamin B complex

# Jet Boost Hydrate (HA)



Maximum concentration of  
**PrimalHyal™ Ultrafiller**, an innovative  
HA derivative

Niacinamide

Betaine

## PrimalHyal™ Ultrafiller

is a mix of 3 HA's:

- A 100-300 kDa HA to **reinforce the skin's natural defense** and **would healing process**
- A 20-50 kDa HA to **improve skin biomechanical properties** and **firmness**
- A 5-20 kDa HA to **rejuvenate the dermis from inside**

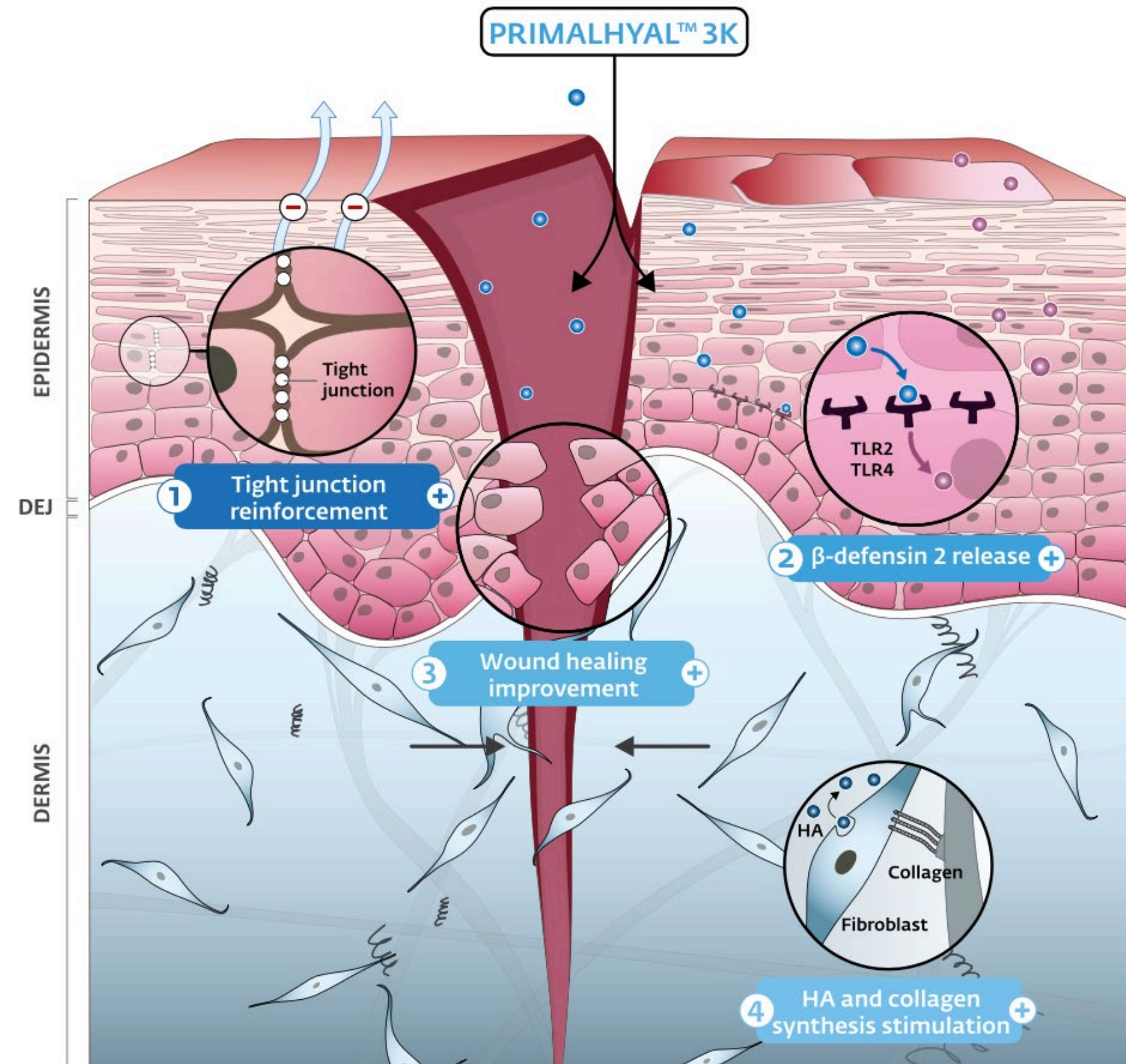


**Did you know that by age 50, we lose 50% of our body's ability to produce hyaluronic acid?**

The solution to fight against this issue is to increase your skin's HA in order to rejuvenate your skin from within.

## **PrimalHyal™ Ultrafiller Mechanism of Action**

Hydration  
Protection  
Repair  
Anti-Aging



# Jet Boost Regenerate (Vit A + E)

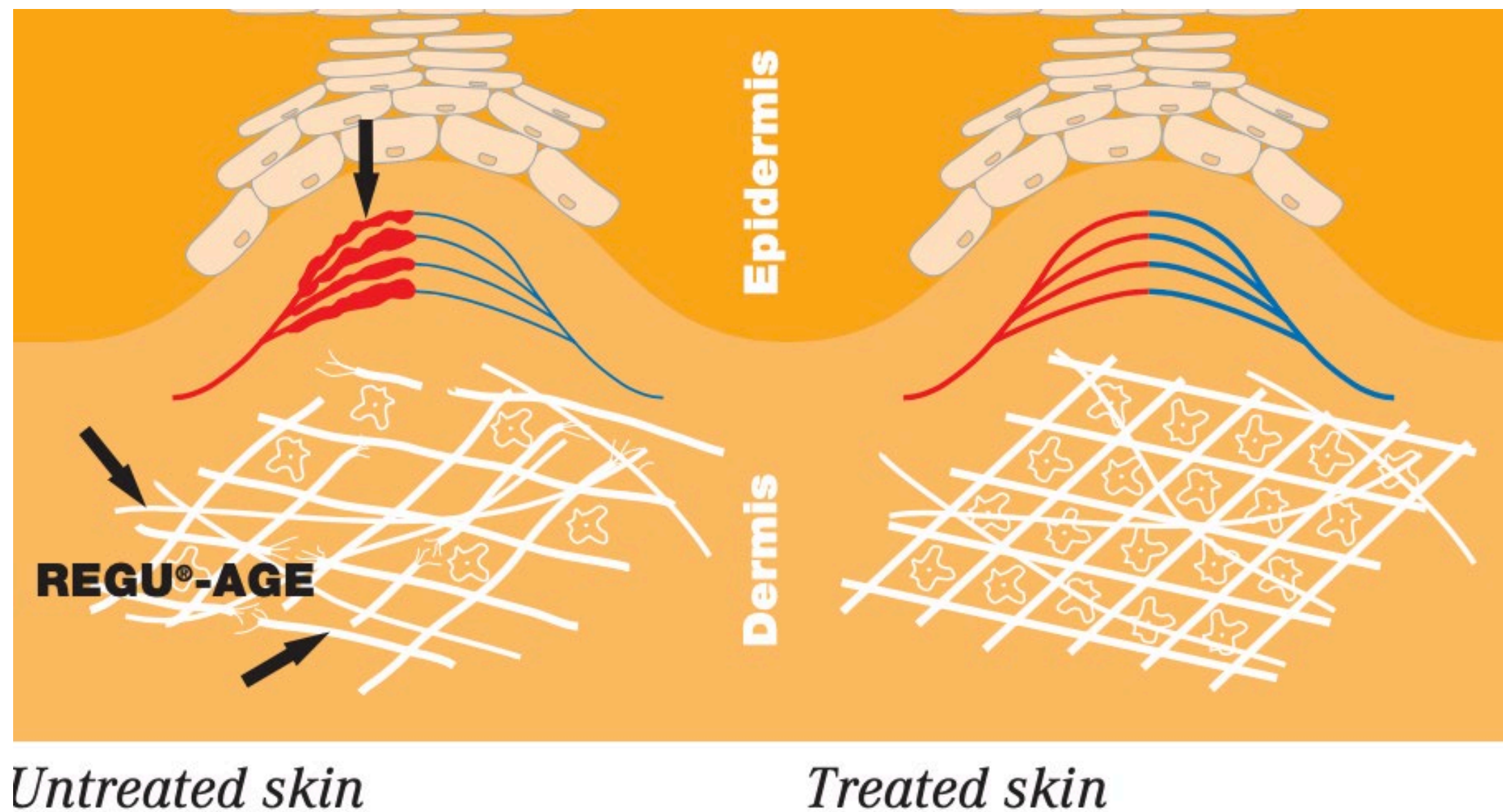


Serum booster enriched with **vitamins A and E** for high performance anti-aging action

Specially formulated to regenerate the skin with the antioxidant power **Regu-age®**, **Pentavitin®** and **Roman Chamomile Extract**

**REGU-AGE®** improves micro- circulation and strengthens the native Collagen and Elastin matrix





## Regu-age®

is a blend of **patented peptides** and **proteins**

## Skin Benefits

- Dramatically **reduces dark circles** and puffiness around the eyes
- **Improves blood microcirculation**
- **Reduce the breakdown of the collagen** and **elastin** matrix
- **Reduce** the presence of **free radicals**

## Pentavitin®

A 100% natural, plant-derived ingredient with both ECOCERT approval and NATRUE certification.

Its effectiveness is based on its unique composition, which is similar to that of the carbohydrate complex found in human skin.

Ensure **instant, deep hydration**, improve the **skin smoothness** and **softness** by more than 50%, **reduction in flakiness** and **itchiness** caused by dry skin.





# Jet Boost Glow (Vit C)



Excellent booster for a beautiful glow effect

Updated formula contains stable vitamin C derivative which is clearly seen by its **yellow color**

Enriched with ACB fruit mix, natural extract of vegetative sources of AHA

**Stable Vitamin C**

**Natural fruit mix extract – source of AHAs**



## Fruit Extract AHAs

Extraction of five plant species. A natural source of AHAs of Lactic, Glycolic, Citric, Mandelic and Tartaric Acids. These AHAs leave the skin smooth and provide a more radiant appearance.

## Benefits

Instantly **softer, smoother** skin, **help moisturize, anti-wrinkles, rejuvenated** and **improve the skin complexion**



# Jet Boost Tight (Vit B Complex)



## **Complex of 3 vitamin B derivatives - B3, B5, B7**

Synergetic effect for a wide range of skin rejuvenation processes

## **Vitamin B5's role in the skin**

Deep penetration moisturizer  
Stimulates epithelisation  
Has wound healing effect  
Anti-inflammatory effect

## **Vitamin B3's role in the skin**

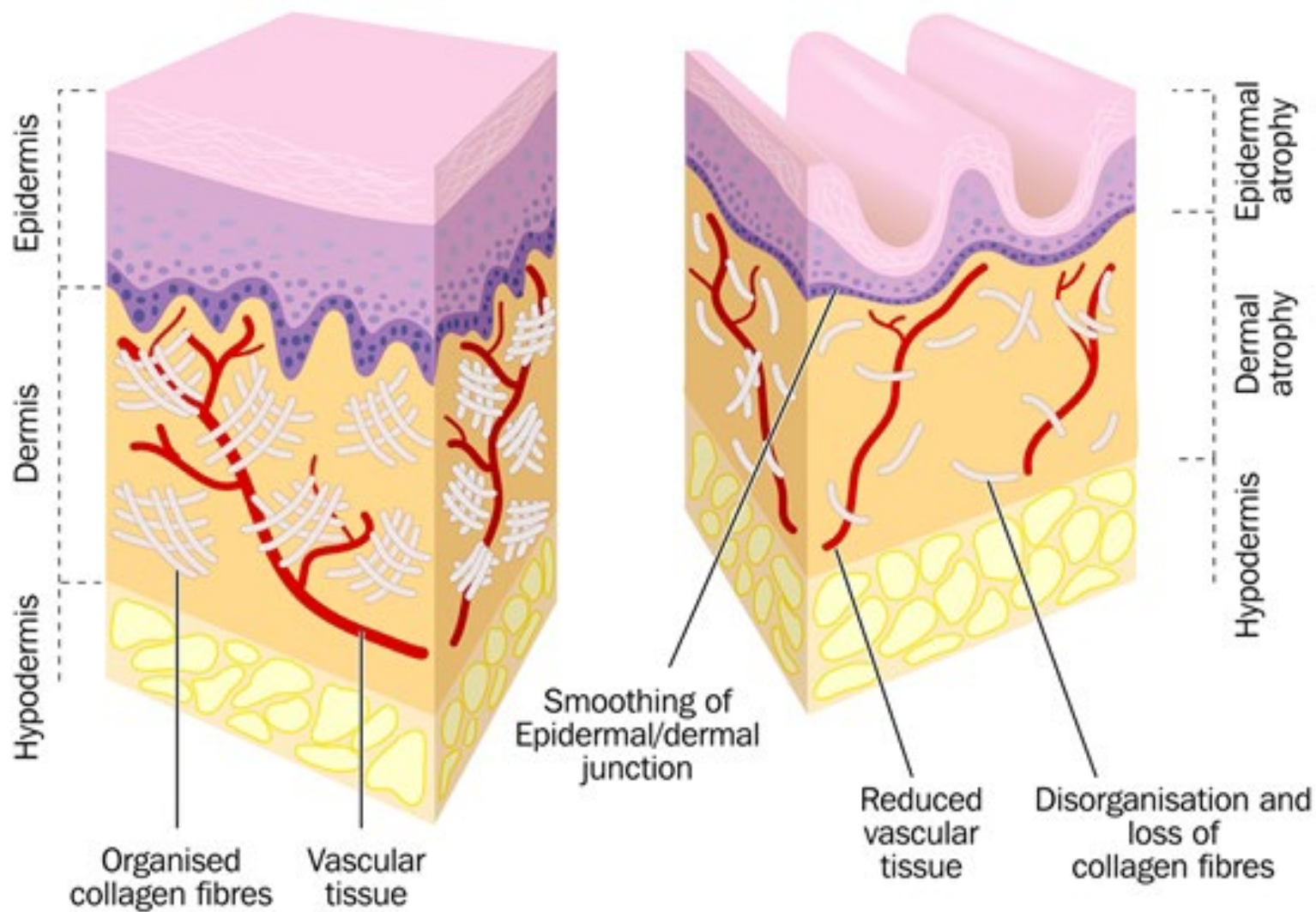
Treats hyperpigmentation  
Promotes skin elasticity  
Decreases redness

## **Vitamin B7's role in the skin**

Nourishment  
Contributes towards healthy looking skin

JetPeel's NEW **Treatment Guidelines** are divided by:

- **Skin Imperfection**
- **Skin age** and
- **Skin Types**



	Normal Skin	Dry Skin	Oily Skin	Sensitive Skin	Combination Skin
Appearance	<ul style="list-style-type: none"> <li>• Radiant complexion</li> <li>• No imperfections</li> <li>• Barely visible pores</li> <li>• Soft appearance</li> <li>• Not too oily, no too dry</li> </ul>	<ul style="list-style-type: none"> <li>• Dull, rough complexion</li> <li>• Red patches</li> <li>• Desquamation</li> <li>• Cracked skin</li> <li>• Less elasticity</li> </ul>	<ul style="list-style-type: none"> <li>• Shiny or dull skin</li> <li>• Humid and bright appearance</li> </ul>	<ul style="list-style-type: none"> <li>• Redness (itching, burning)</li> <li>• Fragile</li> <li>• Dryness</li> <li>• Feel discomfort</li> <li>• Loose the skin barrier protection</li> </ul>	<ul style="list-style-type: none"> <li>• Both dry and oily skin appearance</li> <li>• Oily (forehead, nose and chin)</li> <li>• Dry on the cheeks</li> </ul>
Texture	<ul style="list-style-type: none"> <li>• Barely visible pores</li> </ul>	<ul style="list-style-type: none"> <li>• Almost invisible pores</li> <li>• More visible lines</li> </ul>	<ul style="list-style-type: none"> <li>• Enlarge pores</li> <li>• Blackheads, pimples or other blemishes</li> </ul>	<ul style="list-style-type: none"> <li>• Almost invisible pores</li> <li>• Dryness</li> <li>• Peeling</li> </ul>	<ul style="list-style-type: none"> <li>• Pores that look larger than normal, blackheads are visible</li> </ul>
Secretion	<ul style="list-style-type: none"> <li>• Perfect balance of oil and moisture</li> </ul>	<ul style="list-style-type: none"> <li>• Minimal sebaceous secretion</li> </ul>	<ul style="list-style-type: none"> <li>• Overactive sebaceous glands</li> </ul>	<ul style="list-style-type: none"> <li>• Minimal sebaceous secretion</li> </ul>	<ul style="list-style-type: none"> <li>• On the T zone more production of sebum</li> </ul>



# Loss of Tone and Wrinkles Treatments by Skin Characteristics

## LOSS OF TONE & WRINKLES - YOUNG SKIN

SKIN TYPE	1st Treatment	2nd Treatment	3rd Treatment
Normal	Treatment Guideline 4 with JetCare Boost - Tight	Treatment Guideline 17 Boost with Wide Range HA	Treatment Guideline 4 with JetCare Boost - Regenerate
Dry	Treatment Guideline 4 with JetCare Boost - Tight	Treatment Guideline 17 Boost with Wide Range HA	Treatment Guideline 1 with JetCare Boost - Regenerate
Oily	Treatment Guideline 1 with JetCare Boost - Tight	Treatment Guideline 17 Boost with Wide Range HA	Treatment Guideline 2 with JetCare Boost - Regenerate
Sensitive	Treatment Guideline 4 with JetCare Boost - Tight	Treatment Guideline 17 Boost with Wide Range HA	Treatment Guideline 1 with JetCare Boost - Regenerate

4th Treatment	5th Treatment	6th Treatment	Maintenance Treatments (every 3-4 weeks)
Treatment Guideline 5 with JetCare Boost - Glow	Treatment Guideline 17 Boost with Wide Range HA	Treatment Guideline 12 with JetCare Boost - Hydrate	Treatment Guideline 17 Boost with Wide Range HA
Treatment Guideline 8 with JetCare Boost - Glow	Treatment Guideline 17 Boost with Wide Range HA	Treatment Guideline 17 Boost with Wide Range HA	Treatment Guideline 17 Boost with Wide Range HA
Treatment Guideline 6 with JetCare Boost - Glow	Treatment Guideline 18 Boost with Wide Range HA	Treatment Guideline 12 with JetCare Boost - Hydrate	Treatment Guideline 18 Boost with Wide Range HA
Treatment Guideline 8 with JetCare Boost - Glow	Treatment Guideline 20 Boost with Wide Range HA	Treatment Guideline 17 Boost with Wide Range HA	Treatment Guideline 17 Boost with Wide Range HA

## LOSS OF TONE & WRINKLES – MATURE SKIN

SKIN TYPE	1st Treatment	2nd Treatment	3rd Treatment
Normal	Treatment Guideline 2 with JetCare Boost - Tight	Treatment Guideline 19 Boost with Wide Range HA	Treatment Guideline 6 with JetCare Boost - Regenerate
Dry	Treatment Guideline 1 with JetCare Boost - Tight	Treatment Guideline 18 Boost with Wide Range HA	Treatment Guideline 5 with JetCare Boost - Regenerate
Oily	Treatment Guideline 2 with JetCare Boost - Tight	Treatment Guideline 19 Boost with Wide Range HA	Treatment Guideline 7 with JetCare Boost - Regenerate
Sensitive	Treatment Guideline 4 with JetCare Boost - Tight	Treatment Guideline 17 Boost with Wide Range HA	Treatment Guideline 5 with JetCare Boost - Regenerate

4th Treatment	5th Treatment	6th Treatment	Maintenance Treatments (every 3-4 weeks)
Treatment Guideline 19 Boost with Wide Range HA	Treatment Guideline 29 with JetCare Boost - Glow	Treatment Guideline 10 with JetCare Boost - Hydrate	Treatment Guideline 18 Boost with Wide Range HA
Treatment Guideline 18 Boost with Wide Range HA	Treatment Guideline 29 with JetCare Boost - Glow	Treatment Guideline 17 Boost with Wide Range HA	Treatment Guideline 17 Boost with Wide Range HA
Treatment Guideline 19 Boost with Wide Range HA	Treatment Guideline 29 with JetCare Boost - Glow	Treatment Guideline 11 with JetCare Boost - Hydrate	Treatment Guideline 19 Boost with Wide Range HA
Treatment Guideline 17 Boost with Wide Range HA	Treatment Guideline 29 with JetCare Boost - Glow	Treatment Guideline 17 Boost with Wide Range HA	Treatment Guideline 17 Boost with Wide Range HA

The image displays a variety of JetCare skincare products. On the left, there are three stacks of boxes. The first stack (top to bottom) includes: JetCare Boost SET (white box), Selective Care GROWTH FACTOR (pink box, JC-SCGF), and Selective Care ARGIRELINE COMPLEX (pink box, JC-SCAC). The second stack (top to bottom) includes: Selective Care LIGHTENING (pink box, JC-SCL), Selective Care CLEAR (pink box, JC-SCC), and Selective Care SCALP & HAIR (pink box, JC-SCSH). The third stack (top to bottom) includes: Selective Care SOOTHING (pink box, JC-SCS), JetCare Boost GLOW (teal box, Vitamin C, JCB-G), JetCare Boost HYDRATE (teal box, Hyaluronic Acid, JCB-H), JetCare Boost REGENERATE (teal box, Vitamin A + E, JCB-R), and JetCare Boost TIGHT (teal box, Vitamin B Complex, JCB-T). To the right, there are two stacks of boxes. The fourth stack (top to bottom) includes: Renewal Care MANDELIC & SALICYLIC (dark purple box, JC-RCMS), Renewal Care GLYCOLIC ACID 16% (dark purple box, JC-RCGA16), Renewal Care GLYCOLIC ACID 10% (dark purple box, JC-RCGA10), and Renewal Care GLYCOLIC ACID 5% (dark purple box, JC-RCGAS). The fifth stack (top to bottom) includes: Anti-Aging Care WIDE RANGE HYALURONIC ACID (dark blue box, JC-AAHA), Anti-Aging Care WITCH HAZEL & PEPTIDES (dark blue box, JC-AAWHP), and Anti-Aging Care PEPTIDE COMPLEX (dark blue box, JC-AAPC). A bottle of JetCareHYDRO is positioned at the top right. All boxes feature the JetCare logo and a stylized 'J' icon. The bottles are clear with white caps and labels.